



# MINNESOTA NORTHERN LIGHT

Lutheran Women’s Missionary League  
Minnesota North District

Serve the Lord with Gladness! Psalm 100:2



## WINTER 2014

### Inside this issue

Board of Directors . . . . .	11
Christian Life . . . . .	9
Convention flyer . . . . .	12
Human Care - Ingathering . . . . .	6
Leader Development . . . . .	8
Memorials . . . . .	10
Mission Grants . . . . .	4
Mission Grant Proposals . . . . .	7
Nuclei Chairman . . . . .	2
Scholarships . . . . .	3
Structure/Bylaws . . . . .	4
YWR Invitation to Convention . . . . .	2
Young Women . . . . .	5



The mission of the Lutheran Women’s Missionary League is to assist each woman of The Lutheran Church–Missouri Synod in affirming her relationship with the Triune God so that she is enabled to use her gifts in ministry to the world.

Visit the LWML websites:  
[www.lwml.org](http://www.lwml.org)  
[www.lwmlmnn.org](http://www.lwmlmnn.org)

### President’s pen

Dear Sisters in Christ,

You’ve probably been seeing the Bible verses below more and more. There’s good reason—it is the theme passage for the upcoming LWML District Convention in St. Cloud this summer.

*“For God alone my soul waits in silence; from Him comes my salvation. He alone is my rock and my salvation, my fortress; I shall not be greatly shaken”*

(Psalm 62:1, 2 ESV).



President  
JoNette Brogaard

### Convention theme: “God Alone is Our Rock”

We hope that you are setting aside the dates June 23-25, 2014, to come to the great LWML Minnesota North gathering of sisters and brothers in Christ. Watch the next newsletter for registration forms and more information.

Thank you to the many officers (society and zone) who completed their report forms from the Fall Packet. Now the district counterparts can compile the information and share results with you. Watch for reports in future mailings.

### What’s happening in LWML Minnesota North?

- Watch for and attend your **LWML Zone Planning Meeting**. It will be held in January or February. Check the website for the date and time.
- The **LWML Prayer Service** should be coming out soon. Whether your group size is large or small, why not invite a few neighboring societies to make it an event of prayer and fellowship with more people?
- Consider running for an office on the district level. Or think of someone who you think would serve well in a position and give them a “gentle nudge.” Offices “up for election” at the 2014

Continued on page 2 ...

President's Pen continued ...

convention include: Executive Vice President/Christian Life Chairman, Recording Secretary, Financial Secretary, Regional Vice President-Arrowhead II, Lakeland II, Park II, Pastoral Counselor (Lakeland Region). Contact Elizabeth McTighe, Nominating Committee Chairman, at [emmctighe@yahoo.com](mailto:emmctighe@yahoo.com) if you have a name or names to submit.

- The deadline for submitting a mission grant application for the 2014-2016 biennium is February 15, 2014. Check the website ([www.lwmlmnn.org](http://www.lwmlmnn.org)) for the application form and information.
- We continue to seek someone for the position of Editor of the *Minnesota Northern Light*. If you are interested or have questions, notify the present Editor, Kristin Olsen, at [editor@lwmlmnn.org](mailto:editor@lwmlmnn.org). (LWML knowledge and computer skills are necessary.)

Remember—continue to grow in God's Word, serve Him daily (by serving others), and pray continually!

### **"God Alone is Our Rock"** (Psalm 62:1-2 ESV)

Plans are well underway for the LWML MN North District Convention to be held June 23-25, 2014, at the St. Cloud River's Edge Convention Center in St. Cloud.

The Nuclei Committee has met and many teams are busy making plans for their area of expertise. Volunteers from the Arrowhead II Region are still needed to help in the following areas:

- Properties team
- Publicity team
- Technical team
- Worship team
- Reporters for convention newsletter

For more information regarding the team responsibilities or to volunteer, please contact Nuclei Chairman Corky Rainer at 320-743-2131 or email at [nucleichair@lwmlmnn.org](mailto:nucleichair@lwmlmnn.org).



Corky Rainer  
Nuclei Chairman

## **Seeking: Young Women to attend our LWML MN North District Convention!**

**June 23-25, 2014**

**St. Cloud River's Edge Convention Center  
St. Cloud, Minn.**



### **Encourage Young Women (ages 18-35) to come and...**

- Learn about the LWML;
- Take part in special activities;
- Meet new friends.

### **To find out more about the Young Women activities planned, contact:**

Lynnette Roshell, Young Women Chairman  
[youngwomen@lwmlmnn.org](mailto:youngwomen@lwmlmnn.org)  
651-233-7226

**Visit the district website ([www.lwmlmnn.org](http://www.lwmlmnn.org)) for current convention information.**

### **Mite Marathon**

*However, I consider my life worth nothing to me, my only aim is to finish the race and complete the task the Lord Jesus has given me ...*  
(Acts 20:24 NIV).



With this Scripture verse in mind, the LWML invites all mission-minded men and women to join the Mite Marathon! To learn more about all of the 2013-2015 mission grants and available Power Posters, Bulletin Bytes, Devotions, Prayer Guides and Stories, go to [www.lwml.org](http://www.lwml.org).

## Scholarship Grant recipients 2013-2014 Full-Time Church Work Students

Spring Semester is underway in our colleges and seminaries. For “our” students (the ones to whom we have awarded scholarships) this means they are just that much closer to realizing their dream of becoming full-time church workers.

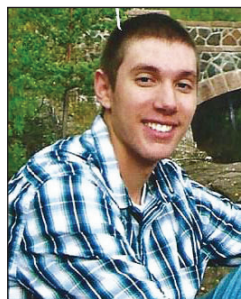


**Jessica Borchardt** is from Henning and attends church at Trinity, Garfield. She is studying to be a Director of Christian Education at Concordia, St. Paul. She has taught Sunday school since she was 14 years old. Three years ago she started a vacation Bible school program, designing the

theme and all of the components. She says she loves to be creative. Service could be her middle name – she is already a blessing to the church. She says, “I love working with children because it is so easy to see and understand having child-like faith.”

**Andrew Coop** is from Mora and a member of Zion Lutheran Church there. He is enrolled at Concordia University, Wisconsin, in the pre-seminary program with the goal of becoming a Lutheran pastor. When he is not studying his theological languages (Greek and Hebrew), he enjoys running in cross country and track and field events. He stated in his essay that the reason he chose to go to Concordia, Wisconsin, is so that he could grow in the Lutheran faith and also in mind and body for the purpose of serving Christ in the church and in the world.

**Josef Muench** lives in Hermantown and attends church at Mt. Olive Lutheran in Duluth. He is in his second year at Concordia University, St. Paul, where he is a pre-sem student. Josef is not timid in sharing his faith and theological views with his peers. From the essay he submitted with his scholarship application he appears to be well-read in Lutheran theology and is both committed and excited about going to seminary to be a servant of the Word. He has been active in his church and youth group as well as using his musical talents to enhance the worship services. Josef enjoys baseball and is on the baseball team at Concordia.



**Mackenzie Lindquist**, from Kerkhoven, is a member of Redeemer Lutheran in Willmar. She is in her second year at Concordia, St. Paul, majoring in Early Childhood Education/Lutheran Classroom Teacher. Her first exposure to the campus of Concordia was when she attended a junior high youth gathering when she was in the eighth grade. When she is not studying, she loves to dance and taught it the last three years of high school. She loves kids and has helped with vacation Bible school and also has served God through service at Lutheran Island Camp.

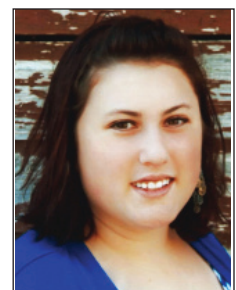
**Laura Kester** is preparing to serve the church as a Lutheran Classroom Teacher. She is a student at Concordia University, St. Paul. She has a love for teaching kids and spreading God’s Word. She has a special love for working with the youth and has helped with the Junior High Youth Gathering at Concordia. She was a little apprehensive at first, but ended up having an amazing time.



**Anna Schield** is in her last year at Concordia University, St. Paul, with a major in Lutheran Elementary Education (K-6). She lives in Two Harbors and attends church at Shepherd of the Lake, Two Harbors. Anna enjoys working with children, guiding their development, answering their questions, and engaging with them

in thinking and learning to be able to respond to their world from a biblical Christian worldview. She would strongly consider engaging in mission work overseas in the future.

**Stephanie Wilde** is a member at Immanuel Lutheran, Parkers Prairie, and is attending Concordia University, Seward, Nebraska. She is preparing for a career as a Director of Christian Education and is especially interested in working with the youth. She seeks opportunities to expand her horizons and has gone on mission



Scholarships continued ...

trips to Jamaica (where she visited orphanages), to Alaska (on a service trip) and to Kenya (through Project 24). She says that through these experiences she was able to witness to the fact that God's love is unconditional. Stephanie has also served at Lutheran Island Camp as a camp counselor.

It is a joy and privilege to be able to help these young people prepare for their careers as church workers. Please remember each of these students in your daily prayers that God will bless them with clear minds and strong faith as they prepare to serve Him with their many talents.

Watch for information on our Seminary Student Scholarship recipients in the next issue of the newsletter.



Linda Jeske  
Scholarships  
Chairman

**We watched, listened and heard how God sent a Savior for all people.**

*"God so loved the world that He sent His only Son that whoever believes in him should not perish but have eternal life" (John 3:16 ESV).*

God has blessed us and we pray that the joy of the blessings of Christmas will be with you and continue throughout the new year.

Thank you to all zones and societies that have been working on your by-laws. Remember to send a final copy to be filed with the District Structure Chairman. Contact me at [structure@lwmlmnn.org](mailto:structure@lwmlmnn.org).

When submitting bylaws, please include a note indicating if your mailing is a final draft for filing, or one that needs approval of the changes.

The Structure Committee is working on an exhibit for the upcoming convention in St. Cloud in June. Please stop by our exhibit for information and answers to your questions about bylaws.



Doris Weispfennig  
Structure  
Chairman

*Serve the Lord  
With Gladness*

**Mission Grants 2012-2014**

**#4 Food and Clothing Co-op Fort Wayne, Indiana - \$10,000**

The Food and Clothing Co-op at Concordia Theological Seminary plays a key role in helping students feed and clothe their families during their seminary years. The seminary seeks to alleviate some of the financial burden by providing enrolled students and their families access to a food and clothing co-op, which is supported through the donations of individual donors, churches and other organizations.

It operates as a cooperative, with each family working a certain amount of time each month to receive points to redeem for grocery items. The students are allowed to shop in the clothing co-op at their own discretion and fulfill their needs at no cost – no points necessary.

Because the Food and Clothing Co-op is such a vital part of the seminary students' lives, it is important that the seminary continue to collect funds to run it and supply it.



## Young and old together ...

Congregations have women members of all ages. All women have different gifts and talents that they bring to the service of our Lord. Societies whose members are all of the same age are missing out on opportunities to learn from each other. It starts with mutual love of the Lord and expands to love of one another.

I have learned much about life and service to the Lord from my older sisters. Most of the LWML Sisters I have met don't act their age. Service to the Lord keeps your heart full and your mind busy, active and young. I learned from Darlene Johnson, Past President of LWML Minnesota South District who recently went to live with her Lord, that there are jobs for everyone in the service of our Lord.



Lynnette Rochelle  
YWR Chairman

The Young Woman Representative program in LWML was established to encourage younger women to learn more about the LWML and to join in serving the Lord with Gladness. The leaders of LWML realized that younger women were not joining in LWML activities as the perception was that the organization was for "old" women. They decided to establish a program which intentionally included younger women in the LWML convention, to get them inspired to serve the Lord and to take that excitement home to their districts, zones and societies.

## Young Women at district convention ...



At national conventions, each district is encouraged to choose up to two young women (ages 22-35) and send them to the convention. Women today have many demands on their time: school, children, husbands, parents, jobs, other church activities, and a multitude of other responsibilities. For many it seems impossible to get away to a national convention to learn about LWML. We have the opportunity June 23 to 25, 2014 to encourage younger women in our district to attend the LWML Minnesota North District Convention in St Cloud. There will be special

activities for the young women in addition to the regular convention activities.

Our convention will offer child care for those women who need it. The fee is small to cover materials and the children will be "right next door." If a young woman is not comfortable with or unable to bring her children to convention, perhaps her society can help her to find child care so she can attend convention.

Bring all the women of your society to the district convention, the young and the old. All will be filled with the love of the Lord and will return home eager to "Serve the Lord with Gladness."



## Friends Into Serving Him discontinued ...



Friends into Serving Him was established as a task force by the LWML. Its purpose was to serve younger girls and to teach them to be mission minded at an even younger age than the YWR program. Recently the task force was disbanded and Friends into Serving Him is no longer a part of the LWML.

The task force determined that there are other opportunities within the LCMS for girls to serve their Lord and that they should be encouraged and supported in those endeavors.

## Ingathering for the district convention

Items needed by the St. Cloud Veterans Administration Health Care System will be part of the ingathering at the 2014 district convention. In talking with the representative, the following information was shared.

### Personal comfort items (must be NEW)

A tremendous amount of the following items are utilized for the patients. An “admission kit” is given to each new patient and contains many of these items. A supply of these are also provided to the wards for patient use. They cannot use anything that contains alcohol such as after-shave, mouthwash, etc.

- deodorant (roll-on, stick)
- toothpaste
- shaving cream
- 30-minute phone cards
- travel style toothbrush holders
- combs & hair brushes
- toothbrushes
- disposable razors
- shower shoes, large and x-large
- travel-style soap dish

### Sewing projects

- Twin size quilts and laundry bags
- They do not need small lap robes of any type right now.
- Please, no crocheted or knitted afghans.

## Human Care

### Clothes (must be NEW)

- Jeans, sweatshirts, pocket t-shirts, socks and underwear.
- They cannot accept used clothes of any type.

### Recreation needs

- Gift cards to local restaurants (St. Cloud area) for outings and pizza parties
- Gift cards for McDonalds for resident outings.

### Mental health needs

- new reading glasses
- dictionaries
- shower shoes
- covered coffee mugs
- pedometers for patients in weight loss programs, education & MOVE programs
- instruments for use with music therapy
- personal CD players and headphones

Watch the website for a pattern for “**clothing savers**” which can be sewn and will be gathered for private home-use, nursing homes, and assisted living homes.

*United through the LWML we will fulfill the above requests in an overwhelming way.*



Deb Anderson  
Human Care  
Chairman



## LWML Chooses theme for Des Moines in 2015

The 36th Biennial LWML Convention is to be held June 25-28, 2015, in Des Moines, Iowa. LWML invites everyone to attend and be fed by God’s Word, nurtured through worship and fellowship, and equipped to sow, nourish, and reap in the Father’s field.

Theme: “Bountiful! Sow - Nourish - Reap”

The convention theme is based on the following Scripture passage:

*And God is able to make all grace abound to you, so that in all things at all times, having all that you need, you will abound in every good work (2 Corinthians 9:18 NIV).*

# Mission Grants

## Submit your Mission Grant proposals

How gratifying and fulfilling it is to watch the grants become paid off as we gather our mites and contributions to meet our goal of \$135,000 for the 2012-2014 biennium! We thank God for His many blessings!!

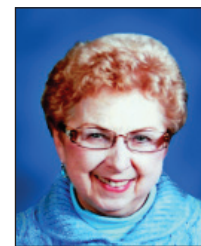
Now it is time for YOU to find a mission that is special to you and submit an application to be considered for the ballot at the LWML Minnesota North District Convention in June 2014. You may submit as an LWML member, society, zone, region, or LCMS Minnesota North Board of Directors.

When considering a grant or need that is special to you, study the following criteria: Grants should:

- fit into the plans and projects of The Lutheran Church—Missouri Synod;
- be mission in emphasis – extending the ministry of the Word;
- be current and ready for implementation;
- be well documented.

For further information and an application form, go to the district website: [www.lwmlmnn.org/Resources/Forms/Applications/Mission Grant Resources](http://www.lwmlmnn.org/Resources/Forms/Applications/Mission_Grant_Resources) or contact Judy Uran at 218-879-5373 or email at [missiongrants@lwmlmnn.org](mailto:missiongrants@lwmlmnn.org).

**Mission Grant Proposals need to be postmarked by February 15, 2014.**



Judy Uran  
Mission Grants  
Chairman

### Let's reach our 2012-2014 Mission Goal of \$135,000!

- Encourage mite giving within your society.
- Remember that those \$5 bills with the purple marking fit nicely inside your Mite Box.
- Consider increasing your mite donation by at least \$5 a month to help meet our mite goal.
- Participate in the *Joyful Response*® electronic giving program. The enrollment form and information is available at [www.lwmlmnn.org](http://www.lwmlmnn.org) at the “Resources” tab for “Financial Secretary.”
- Mites should be mailed in **by March 15** to the Financial Secretary to be included in the 2012-2014 biennium goal.



**2012-2014  
Mission Goal  
Status as of  
December 31,  
2013**

	<b>Goal</b>	<b>Balance</b>
#1 Orphan Grain Train	\$ 8,500	\$ 2,000.00
#2 Scholarships for Full-Time Church Work Students	\$ 50,000	\$10,000.00
#3 Financial Support and Staff Training—Lutheran Island Camp	\$ 10,000	Paid in Full
#4 Food and Clothing Co-op, Ft. Wayne	\$ 10,000	\$ 2,000.00
#5 Scholarships for Men Preparing for Ordination	\$ 5,000	\$ 1,138.02
#6 Vehicles for Pastors and Vicars in Haiti	\$ 20,000	\$ 4,400.00
#7 Christian Education at Dakota Boys and Girls Ranch RRV	\$ 5,000	\$ 1,000.00
#8 Construct Classroom Building in Yambio, So. Sudan (LHF)	\$ 10,000	Paid in Full
#9 Christian Storybooks for SE Asia (LBT)	\$ 1,000	Paid in Full
#10 Anyuak Ministry, Sauk Rapids	\$ 5,000	Paid in Full
#11 Servant Events on the Fond du Lac Reservation	\$ 5,000	\$ 900.00
#12 Mary Okeyo Student Scholarship Fund for Travel	\$ 5,500	\$ 2,500.00
<b>TOTAL</b>	<b>\$135,000</b>	<b>\$23,938.02</b>

## Leader Development

### The door is opening for you

We just finished celebrating once again the birth of our Savior this past Christmas. Our 2014 convention verse summarizes how I felt this Christmas Eve when I sang the hymn *Silent Night*.

*“For God alone my soul waits in silence; from Him comes my salvation. He alone is my rock and salvation, my fortress; I shall not be greatly shaken”* (Psalm 62:1, 2 ESV).

Jesus Christ, the Babe of Bethlehem, is indeed that rock and fortress. I know that no matter what I do, He will be with me.

I have typed out that verse and placed it above my desk at home. When I start to doubt what I am doing as a leader in the LWML, worry about how a project is going to go, or began to doubt that I am doing a good job, I read those two verses and once again I am reminded that, *“He alone is my rock and salvation, my fortress; I shall not be greatly shaken.”*



I need to put my full trust in the Lord, He will give me the wisdom, knowledge, and all the help I need to do His work. I need to have faith.

When we are asked to take any kind of leadership role in our lives, how many times do we say to ourselves, "I just can't do that," "I'm just not a leader," or "I'm not equipped to handle that position"? Do we stop and pray before saying, "No"? Do we ask ourselves, "Is this a door opening and another way for me to use the talents and gifts our Lord has given me?"

The LWML offers each of us many opportunities to use our own unique gifts to serve our Lord. Take advantage of them. Use the district and national websites for resources, attend your society meetings, zone and regional rallies and workshops, and the district and national conventions. You can contact me



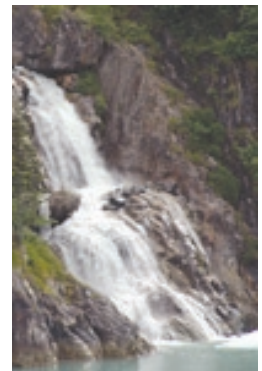
Lynn Lahd  
Leader Development  
Chairman

for Leader Development materials at [leaderdevelopment@lwmlmnn.org](mailto:leaderdevelopment@lwmlmnn.org).

Mark your calendars and plan on coming to the 2014 LWML Minnesota North District Convention, June 23-25, 2014, with the theme "God Alone is Our Rock." You will find Bible studies, speakers, exhibits, and break-out sessions that will encourage us in knowing again that *Christ is our Rock and Salvation* at all times and in all places.

### 2014 LWML Prayer Service "This Is What We Are Baptized For—"

2013 was an interesting year in our church body. The Youth Gathering and the Lutheran Women's Missionary League Convention and The Lutheran Church—Missouri Synod Convention were all held in one summer. If you paid attention, you could look at the themes and see your baptism in the background.



This prayer service is designed to help us find out what we are baptized for and to ask for the strength and grace to do it. It includes an original hymn by the author, Rev. Bernhard Seter, based on the words of the LWML Pledge. Seter said, "I am convinced when I read the LWML pledge that works of mercy and service in support of Gospel proclamation is what all of us were baptized for. [That sentence] may be bad grammar but it is great theology."

Download the Prayer Service at [www.lwml.org/event/](http://www.lwml.org/event/) then click on "Prayer Service," or call 1-800-252-5965 to obtain a paper copy.

### "Praise, Love, Serve"

The Christian Resources Editors recently received a new LWML song from author Jean Hansen Kammerer of Stevensville, Montana, entitled, "Praise, Love, Serve." The lyrics are based on the LWML Pledge, and the tune is the very familiar, "O Little Town of Bethlehem."

You can find the free download at [www.lwml.org/other/who-we-are-more/pledge-songs.php](http://www.lwml.org/other/who-we-are-more/pledge-songs.php). Ready-to-print PDF versions are also available.



## Christian Life

### Gossip

“Did you hear about ...?”  
Oops, I did it again. Why is it so easy to gossip? Like James 3:7-8 says, *“For every kind of beast and bird, of reptile and sea creature, can be tamed and has been tamed by mankind, but no human being can tame the tongue. It is a restless evil, full of deadly poison”* (NIV).

Look also at Proverbs 18:8, *“The words of a gossip are like choice morsels; they go down to the inmost parts”* (NIV).

How can I tell the difference between genuine concerns for someone and gossip? Before you repeat anything you have heard, ask yourself these questions:

1. Is it true? If you are not sure, don't say it.
2. Is it kind? It may be true, but do you really need to tell others?
3. Is it helpful? Does it clarify what the person did or said? Is the person I am telling able to help in ways I am not able to help?



*“Let no corrupting talk come out of your mouths, but only such as is good for building up, as fits the occasion, that it may give grace to those*

*who hear”* (Eph 4:29 ESV).

Heavenly Father, *“Set a guard over my mouth; keep watch over the door of my lips”* Amen (Psalm 141:3 ESV).



Mary Kuhnau  
Christian Life  
Chairman

### New Bible studies available through the LWML catalog:

#### “Ever Only, All for Thee”

How many times have we sung the familiar hymn, “Take My Life and Let It Be” without closely examining the lyrics? This six chapter Bible study by Holly Wietfeldt will lead you and your Bible study group in doing just that. Frances Havergal wrote this hymn in 1874 stressing how we can dedicate our lives to the Lord. This Bible study follows the gradual deepening of dedication illustrated in the hymn lyrics. See how the hymn parallels our LWML pledge and how, with the help of the Holy Spirit we can deepen our dedication to the Lord. Order #20415 – Leader’s Guide, and #20416 – Study Guide.



#### “Your Strong Suit”

This eight week, verse by verse study of the armor of God, details the incredible protection that God has provided to His children. Even though we may not like discussing spiritual warfare, it is necessary because it is real. Spiritual warfare has the potential to rob us of peace and security only to leave behind doubt and unrest. But God offers protection to us – HIS protection. Journey through this study as we learn about the battle, our enemy, our armor and our place in God’s army. But most importantly, we come to know the rock solid truth that God has provided everything we need to proclaim ultimate victory. Order #68930 – DVD and one 85-page color print workbook.



### Mission Prayer Cards for the 2013-2015 biennium

These Mission Grant Prayer Cards, one for each of the LWML 18 mission grants, are designed as a tool to remind everyone to pray for those serving as missionaries and those who will hear and see the love of Christ through these mission grants. Use these cards in your personal prayers, hand them out at all events, and give them as thoughtful gifts.

Now you can download these free prayer cards at [www.lwml.org/missions/mission-grants/](http://www.lwml.org/missions/mission-grants/) then click on “All Prayer Cards.”

You may also order these FREE through the LWML Office at 1-800-252-5965 for the cost of postage.





- ♥ Lord of the Lakes, Forest Lake, for Darlene Johnson
- ♥ St. Paul's, Loon Lake, for Kevin Kratzke, Richard Kuam and Gayle Sonnenberg
- ♥ Trinity, Sauk Rapids, for Johanna Nielsen

- ♥ Immanuel, Parkers Prairie, for Randy Zimmerman and Richard Drewelow
- ♥ Arnold and Diane Althoff for Violet Gehrke
- ♥ Howard Neumann and Elaine Metzger for Janice Neumann
- ♥ JoNette Brogaard for Violet Abraham
- ♥ Kristin and Carlyle Olsen for Enid Toenjes
- ♥ Zion Evening Guild, Alexandria, and JoNette Brogaard for Edna Anderson
- ♥ Immanuel, Parkers Prairie, for Adeline Quitmeyer and Virginia Barta
- ♥ St. John's, Kimball, for Loretta Fox
- ♥ Zion Evening Guild Alexandria for Lorraine Beckman
- ♥ Christ Lutheran, Elbow Lake, for Lucille Lidbeck
- ♥ Our Redeemer, Moorhead, for Lucille Lidbeck
- ♥ Zion, Sauk Centre for Veronia Vogt.
- ♥ Zion, Sauk Centre in honor of Doris Scott's 50th wedding anniversary.
- ♥ Cheryl Hamil, Carol Benson, Barbara Ross, Bonnie Cloose, Marilyn Hiltel, and JoNette Brogaard for Lucille Lidbeck

Memorial and honor gifts should be sent to:  
 LWML MN North District,  
 c/o Financial Secretary Marilyn Hiltel  
 6850 Golden Spike Road, Sauk Rapids, MN 56379-9715

**Lucille (Phillips) Lidbeck  
 Past President**

Our sister in Christ and Past President of LWML Minnesota North District, Lucille (Phillips) Lidbeck, received her Crown of Glory on Saturday, November 9, 2013, at the age of 75 years.

Lucille was a life-long active member on the society and zone level of LWML, and served as President in the years 2000–2004.

She also served many roles in her church including Sunday school teacher and superintendent, choir member, and served on the Mission Committee.

Funeral services were held on Wednesday, November 13, at 10:30 a.m., at Trinity Lutheran Church, 1150 West Cavour, Fergus Falls, Minn.

Praise God for Lucille's dedication to the LWML!



**Prayer & Praise Mite Calendar**

The Prayer and Praise Mite Calendars are a fun way to increase your Mite Box giving. Included on the calendar are daily prayer petitions to support the LWML and our 2012-2014 mission grants. These calendars are available on the district website under the "Publications" tab.



Your *Lutheran Woman's Quarterly* subscription questions should be directed to our Corresponding Secretary, Tessa Giru, [correspondingsec@lwmlmnn.org](mailto:correspondingsec@lwmlmnn.org).

Please send your photos, articles, and information for *The Lutheran Witness* supplement page to: Kristin Olsen, Editor, [editor@lwmlmnn.org](mailto:editor@lwmlmnn.org).

The *Minnesota Northern Light* is published quarterly by the LWML Minnesota North District following the meeting of the Board of Directors in January, April, July, and October.

## LWML MINNESOTA NORTH DISTRICT BOARD OF DIRECTORS

### Executive Committee

#### **President:**

JoNette Brogaard, 320-846-0984  
president@lwmlmn.org

#### **Executive Vice President:**

Mary Kuhnau, 320-834-2135  
christianlife@lwmlmn.org

#### **Recording Secretary:**

Lynnette Roshell, 651-233-7226  
recordingsec@lwmlmn.org  
youngwomen@lwmlmn.org

#### **Corresponding Secretary:**

Tessa Giru, 218-682-3432  
correspondingsec@lwmlmn.org

#### **Financial Secretary:**

Marilyn Hiltel, 320-387-2219  
financialsec@lwmlmn.org

#### **Treasurer:**

Jenny Biorn, 763-263-1025  
treasurer@lwmlmn.org

### Regional Vice Presidents

#### **Arrowhead I:**

Judy Uran, 218-879-5373  
missiongrants@lwmlmn.org

#### **Arrowhead II:**

Lynn Lahd, 651-245-6552  
leaderdevelopment@lwmlmn.org

#### **Lakeland I:**

Doris Weispfennig, 320-554-3324  
structure@lwmlmn.org

#### **Lakeland II:**

Janet Hasbargen, 320-563-4962  
publicrelations@lwmlmn.org

#### **Park I:**

Deb Anderson, 218-732-4395  
humancare@lwmlmn.org

#### **Park II:**

Linda Jeske, 320-594-3034  
scholarships@lwmlmn.org

### Pastoral Counselors

#### **Arrowhead Region:**

Rev. Don Stauty, 218-741-1977 (O),  
218-749-5541 (H)  
arrowheadpc@lwmlmn.org

#### **Lakeland Region:**

Rev. Ronald Hobbie, 320-269-9229  
lakelandpc@lwmlmn.org

#### **Park Region:**

Rev. Anthony Cloose, 218-334-8125  
parkpc@lwmlmn.org

### Appointed Personnel

#### **Editor:**

Kristin Olsen, 320-632-1773  
editor@lwmlmn.org

#### **Archivist-Historian:**

Kathleen Brehmer, 320-255-8987  
historian@lwmlmn.org

#### **Information Technologist:**

James Wagner, 218-289-2457  
InformationTech@lwmlmn.org

---

### Committee Chairmen

**Christian Life:** Mary Kuhnau

**Human Care:** Deb Anderson

**Mission Grants:** Judy Uran

**Structure:** Doris Weispfennig

**Leader Development:** Lynn Lahd

**Scholarships:** Linda Jeske

**Young Women:** Lynnette Roshell

**Public Relations:** Janet Hasbargen

#### **Websites:**

**LWML:** [www.lwml.org](http://www.lwml.org)

**LWML Minnesota North:**  
[www.lwmlmn.org](http://www.lwmlmn.org)



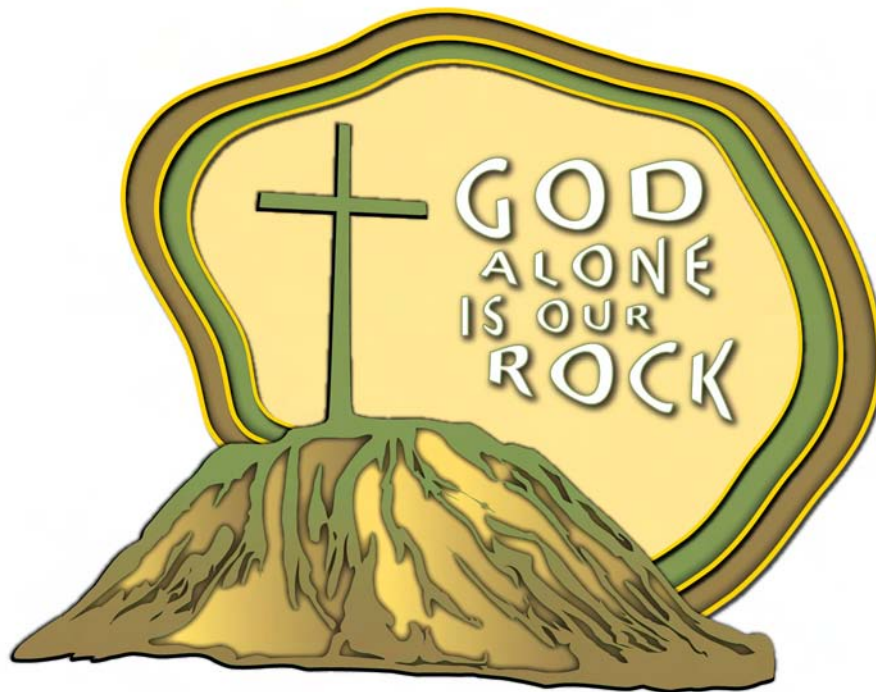
### **2012-2014 Board of Directors**

Back row: Linda Jeske, Rev. Don Stauty, Rev. Ron Hobbie, James Wagner, Rev. Anthony Cloose, Lynnette Roshell.

Middle row: Janet Hasbargen, Mary Kuhnau, Kathleen Brehmer, Lynn Lahd, Deb Anderson, Kristin Olsen.

Front row: Judy Uran, Doris Weispfennig, JoNette Brogaard, Jenny Biorn, Marilyn Hiltel, Tessa Giru.

Lutheran Women's Missionary League  
Minnesota North District  
26<sup>th</sup> Biennial Convention  
June 23 - 25, 2014



**Theme:** "God Alone is Our Rock"

*"For God alone my soul waits in silence  
from him comes my salvation.*

*He alone is my rock and my salvation, my fortress;  
I shall not be greatly shaken."*

*Psalm 62:1-2 (ESV)*

**Keynote Speaker:** Rev. Paul Krueger

Senior Pastor at Our Savior Lutheran Church, Minot, ND  
Director of Hope Village, Minot, ND

**Bible Study Leader:** Rev. Brady Finnern

Pastor at Messiah Lutheran Church, Sartell, MN

**Entertainment:** Looney Lutherans

**Convention Location:** St. Cloud River's Edge Convention Center  
St. Cloud, MN

**Hosting Region:** Arrowhead II

**Some Happenings at Convention:**

Breakout Sessions, Mites in Action Speakers, Election of Officers, New Mite Goal for 2014-2016 Biennium,  
Mission Grants Selected, Mite Walk, Servant Events, Human Care Ingathering and much more!

For more information visit the District website: [www.lwmlmnn.org](http://www.lwmlmnn.org)