



MINNESOTA NORTHERN LIGHT

Lutheran Women's Missionary League
Minnesota North District



Serve the Lord with Gladness! Psalm 100:2

SPRING 2012

President's Official Call to Convention

Arise! Shine! Your Light has Come ...
I invite you to come to the 25th Biennial Convention
of the Lutheran Women's Missionary League Minnesota North District
Breezy Point Resort, 9252 Breezy Point Drive, Breezy Point, Minnesota
June 25-27, 2012

The voting body of the convention will be selecting mission grants for the 2012-2014 biennium; approving bylaw changes; electing new officers for President, Corresponding Secretary, Treasurer, Regional Vice Presidents for Arrowhead I, Lakeland I and Park I, and Park Region Pastoral Counselor.



Inside this issue

Christian Life	10	Mission Grants Proposed	12
Convention Registration	13	Mission Advocacy & Grants	5
Gifts from the Heart	5	Mite Walk	7
Human Care/Ingathering	3	Nominations for Board	8
Leader Development	9	President's Pen	2
Retreat Registration	23	Proposed Bylaws Amendments	15
Memorials	5	Scholarships	4
Mission Grants 2010-2012	6	Young Women	4

The mission of the Lutheran Women's Missionary League is to assist each woman of The Lutheran Church-Missouri Synod in affirming her relationship with the Triune God so that she is enabled to use her gifts in ministry to the world.

Visit the LWML websites:
www.lwml.org
www.lwmlmn.org

President's Pen

So long, farewell
Auf Wiedersehen,
goodbye
I leave and heave
A sigh and say goodbye
Goodbye



These are the lyrics from the well remembered musical "The Sound of Music." I thought it was fitting to sing these to all of you for a few reasons.

First, at the February LWML Board of Directors meeting, it has become a custom for the Senior District Presidents (of which, I am one) to prepare an outgoing presentation. This is often a tongue in cheek type of ordeal, where it is a tribute to the LWML President and also an encouragement for the Junior District Presidents, as they will now become the Seniors. Anyway, in February, the Senior DPs sang an adaptation to this song.

Second, I think of this song and know that I am saying goodbye to each of you as your District President. However, it's not a goodbye forever. Yet I do say farewell with a sigh, as I have enjoyed my time with each of you and all of the special events we have been blessed with throughout these past four years.

Finally, I thought of these words from this song, because I thought it was fitting for this time of year - Spring and Easter. We bid farewell to the dreary days of winter and celebrate the newness of life with spring. This is indicative of what we celebrate within the church -- Christ's death on the cross. While dark and sad, it doesn't end there. We rejoice in the Resurrection, the new life which we will have with Him forever.

I will close with lyrics from the Nicole Norde-man song, "Every Season," to complete my farewell to you, knowing that we will begin a new season of life in which we will see each other again.

Every evening sky, an invitation
To trace the patterned stars
And early in July, a celebration
For freedom that is ours
And I notice You

In children's games
In those who watch them from the shade
Every drop of sun is full of fun and wonder
You are summer

And even when the trees have just surrendered
To the harvest time
Forfeiting their leaves in late September
And sending us inside
Still I notice You when change begins
And I am braced for colder winds
I will offer thanks for what has been
and was to come
You are autumn

And everything in time and under heaven
Finally falls asleep
Wrapped in blankets white, all creation
Shivers underneath
And still I notice you
When branches crack
And in my breath on frosted glass
Even now in death,
You open doors for life to enter
You are winter



And everything that's new has bravely surfaced
Teaching us to breathe
What was frozen through is newly purposed
Turning all things green
So it is with You
And how You make me new
With every season's change
And so it will be
As You are re-creating me
Summer, autumn, winter, spring

*God's Blessings,
Cheryl Petersen*



Ellen Strickler
Human Care
Committee
Chairman

We just celebrated the resurrection of our Lord and Savior Jesus Christ and are looking forward to the spring resurrection of flowers, grass and leaves. Jesus is forever faithful bringing us the change of seasons. With that change we anticipate a beautiful spring and summer to follow. This summer will be a special one! Join us for the MN North LWML District Convention to celebrate the Word and promises that Jesus has given. Arise! Shine! Your Light has come..

Human Care

A special part of the convention is the Ingathering and Servant Events. We have planned some exciting projects, so come ready to “shine” for the Lord.

Our ingatherings for the convention will be:

A Baby Shower for the LAKES AREA PREGNANCY SUPPORT CENTER in Brainerd

Lakes Area Pregnancy Support Center helps women and men experiencing unplanned pregnancies. Their mission is to equip women and men in life affirming decisions which will provide a positive outcome for both mother and child.

Daily Needs:

- New or gently used mattress pads
- New or gently used crib sheets
- Baby clothes (up to size 2T)
- New & used receiving blankets
- Baby hygiene items
- Maternity clothes

Incentive Program Needs:

- Cribs (no drop sides, slats 2 3/8” apart)
- Pack and Plays
- Baby Swings
- Bouncy Seats
- Diapers (preemie, newborn, size 1,2,3)
- Baby Monitors

*NOTE: *Items may be new or gently used unless indicated with an asterisk.*

Gift Bag Items; (all these items are new):

- Newborn and preemie outfits
- Baby Wipes
- New Diaper Bags
- 4oz & 8oz baby bottles
- Infant brush, comb & nail clippers
- Travel size toiletries
- Onesies, sleepers, pacifiers, socks, baby toys

- Boppy Pillow
- Crib linen sets
- Strollers
- High Chairs
- *New car seats
- Baby wipes



GOOD SAMARITAN SOCIETY, Bethany of Brainerd

Bethany is in need of: socks with grips, adult bibs, new puzzles, appropriate reading material.

GREEN SNEAKER PROJECT, SHARE YOUR OLD TENNIS SHOES

Please **recycle** your old sneakers. They become **REUSED** as affordable footwear for people in need around the world. They raise funds for **Lutheran Island Camp** and help support jobs in third world countries.

GIFTS FROM THE HEART

- ☛ Campbell’s Soup Labels
- ☛ Gift, gas & phone cards for Seminary Students
- ☛ Stamps

Our Servant Events for the convention will be:

- ☛ Rolling Bandages
- ☛ Tying baby quilts and lap robes
- ☛ Making Linus Blankets
- ☛ Making eye glass cases

“Serve the Lord with gladness” (Psalm 100:2) is the motto of LWML. The word glad or gladness appears in the King James Version of the Bible 144 times. While not a record, a substantial number of times.

What does it mean to serve the Lord with gladness? I would guess everyone has an idea what it means, but actually doing it may be where the challenge comes in. Sometimes we are asked to do a task that it is very difficult to be glad about. At our church, we do not employ a janitor; each family takes turns cleaning the church. It can be a challenge to be glad when you are cleaning the toilets. To be honest, I am much gladder when it is another family’s turn. But I can be glad that God has equipped me to serve his people even in this way.

My involvement with the LWML has given me many opportunities to serve the Lord over the years. I have been an officer at the society, zone, and district level. I served as a YWR in 1997 to the LWML Charlotte District Convention. I have served on committees, led committees, and have just volunteered to do the work put in front of me by God. I know that I have grown as a person in confidence so that I can speak in front of large crowds. I can organize an event for a church group. God has provided me the wisdom and the strength to serve Him, even when I may not have thought I had the time or the endurance to perform the needed task.

The most challenging thing is to take that first step. Come to the first LWML meeting, attend a district convention, or volunteer for a committee. God gives you back so much more than you will ever expect. If you have already made it to that first meeting, then find someone who has not made that step



Lynnette Roshell
Young Woman
Representative (YWR)
Chairman

and bring them along. As with walking, the first step is the most difficult. Involvement in the LWML will give you more than you can ever imagine. You will learn to serve the



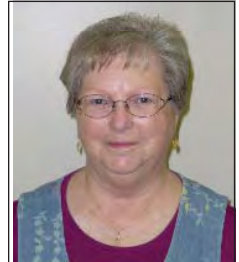
YWRs at 2010 LWML MN North District Convention

Lord with gladness, even when the task is a dirty or difficult one. You will grow in the spirit of the Lord. You will know gladness and love.

“Whatever you do, work heartily, as for the Lord and not for men ...” (Colossians 3:23).

Scholarships

Spring is here ... Soon the weather will be warmer, crocus will be blooming, the robins will return and once again the dried grasses will be green. The renewing of the earth reminds us of the renewing of our spirits as we celebrate the resurrection of our Lord Jesus and reflect on all that He has done for us.



Linda Jeske
Scholarships
Committee
Chairman

For the students that we have assisted through scholarship grants this past academic year, spring heralds the end of studies and tests for a while. For some, it will be the end of their formal education and a time of anticipation as they await their first calls into service in the church as teachers, directors of education, deaconesses, or placement into their first parish. For others, spring heralds a break from studies and a time to be with family, friends and that summer job.

Several students, having completed their pre-seminary training, will be moving on to one of our seminaries for additional studies leading to Ordination. As sisters of the LWML, we rejoice in their accomplishments and thank God for His blessing on the giving of our mites that provided the funds for these scholarships.

This past biennium, your mites have funded two scholarships for men preparing for ordination and 23 scholarships for full-time church work students. Our work is not yet done – at the 25th Biennial Convention at Breezy Point Resort, June 25-27, 2012, we will once again have the opportunity to select both of these scholarship proposals and keep this valuable program active.

Scholarship applications have begun arriving and the committee will soon meet to make the selections for this coming academic year. As our students commit their hearts and mind to preparation for service in our Lord’s church, we also need to commit our hearts and mites to helping them reach their goals.

“And let us not grow weary of doing good, for in due season we will reap, if we do not give up”
-4- (Galatians 6:9).

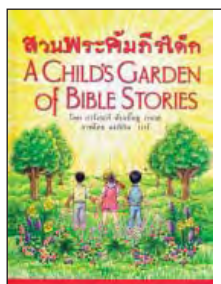
Mission Grant #6: Children's Bibles for the People of SE Asia - \$7,500

We are closing out our Mission Grants for 2010-2012 with a brief history of the project of the Lutheran Heritage Foundation (LHF). As a Recognized Service Organization (RSO) of the LCMS, they have been translating and publishing Lutheran books in SE Asia. Translators found that younger people were the most open to learning more about Christianity. Many of these young people are establishing their own families and are eager to pass on their faith in Christ to their children. The main challenge was that there were no books in their own languages. This is where LHF started translating and publishing *A Children's Garden of Bible Stories* into languages of SE Asia. The book is given free to the people and churches that need them.



Dorothy Abrahamson
Mission Advocacy
& Grants Chairman

The book is currently being printed for Thailand and Cambodia (Thai, Khmer and Bahasa), but within the next three years they will be available in Burma, Laos, Vietnam, Malaysia and China.



These books are not only needed in SE Asia; they're also needed in the United States. Minnesota has the second largest populations of Laotians and Thai, as well as large groups of Hmong, Vietnamese, Cambodian, and Chinese immigrants. Most of these families come from a Buddhist background and know nothing about their true Lord and Savior, Jesus Christ.

The book has been gratefully and joyfully received by missionaries and church leaders, who previously had nothing to use in teaching Sunday school classes. Children flock to the Sunday school classes where they receive their own brightly-illustrated copies and learn about their Heavenly Father. For most of these children, *Children's Garden* is the only book they own, and are eager to share it with their friends.

"You Go Girl" is a phrase used recently in a Leader Development publication. That's the attitude I'd like to take when congratulating you, women of Minnesota North, for the projects and "Gifts from the Heart" you recorded on the fall forms.



Gifts from the Heart

You showed your spunk by contributing 18,614 pounds of food and \$27,091 to food shelves.

You donated over \$70,063 to various organizations, funds, benefits and causes.

You made with love:

- 1,109 T-shirt diapers
- 330 Linus blankets
- 1,970 Pillowcase Dresses,
- 5,824 Quilts
- 365 Layette, 809 other kits.

Way to go girls!

Ellen Strickler, Human Care
Committee Chairman



Memorial Gifts

- Immanuel, Parkers Prairie, for Marvin Duberowski and Patty Kalpin
- Loon Lake, St. Paul's for Ralph Richter
- Sauk Rapids, Trinity for Vera Larson
- Joan & Roy Martell for Donna Hustad
- David and Evonne Bode for Thelma Derkey
- Kristin Olsen for Rev. Robert Koehler

Memorial and honor gifts should be sent to:
LWML MN North District
c/o Financial Secretary Marilyn Hittel
6850 Golden Spike Road
Sauk Rapids, MN 56379-9715



2010-2012 Mission Goal Status

PROJECTS	GOAL	PREVIOUSLY PAID OR ALLOCATED	PAID OR ALLOCATED THIS QUARTER	BALANCE
Scholarships for Full-Time Church Work Students	\$55,000	\$40,023	\$14,977	PAID
Scholarships for Men Preparing for Ordination	\$10,000	\$6,250	\$331.98	\$3,418.02
Lutheran Island Camp, Financial Support for Staff Training	\$10,000	\$7,375	\$2,625	PAID
Food Bank at Concordia Seminary, St. Louis	\$5,000	\$5,000		PAID
Orphan Grain Train	\$8,500	8,500		PAID
Children's Bibles for the People of SE Asia	\$7,500	\$7,500		PAID
Medical Clinic, Cap Haitien, Haiti	\$25,000	\$21,327	\$3,673	PAID
Food & Clothing Co-op, Concordia Seminary, Ft. Wayne	\$5,000	\$5,000		PAID
Production of Audiocassette Materials - Lutheran Blind Missions	\$4,000	\$4,000		PAID
Anyuak Ministry, Sauk Rapids, MN	\$5,000	\$5,000		PAID
TOTALS	\$135,000	\$109,975	\$21,606.98	\$3,418.02

For all mite contributions, make check payable to "LWML MN North District" and mail to: Financial Secretary Marilyn Hiltel, 6850 Golden Spike Road, Sauk Rapids, MN 56379-9715.



LWML Introduces "A Cup with Kay"

LWML President Kay Kreklau enjoys a cup of tea while reading the Scriptures, or while in prayer. President Kay is inviting you to pray with her, and your brothers and sisters-in-Christ, on Saturday mornings for 9 minutes at 9:00 a.m. Just as steam from your cup, all prayers will rise up! Check out FaceBook at www.facebook.com/TheLWML, or the LWML website at www.lwml.org/missions for monthly mission grant highlights as a suggested focus for your prayers.

Arise! Shine! Your Light has Come ... to the "SON Rise Mite Walk"

- Arise, to walk with us;
- Shine, as witnesses to God;
- as our Light has Come to us through Jesus our Savior;
- walk to earn money to spread the Gospel to the world.

This year's mite walk will have a different twist. We will be walking onsite at Breezy Point. We will be walking to raise money for the mites. However, we are going to wear our old mite walk T-shirts. If you have been on a mite walk at a previous convention we are asking you to wear that T-shirt. If you have an extra T-shirt you may consider bringing it to convention for someone else to wear. It will be fun just seeing all of the different T-shirts.

If you don't have an old mite walk T-shirt, your options could be borrowing one from some of those brought to convention, or you could wear a T-shirt from your church, church school or LWML group. The possibilities are endless.

The mite walk committee is asking you to consider donating the money you would have used to purchase a new T-shirt for the walk to the mite fund. Thank you!

If you have any questions just contact Peggy McKeown, 2012 LWML MN No. District Convention Nuclei Chairman at pjmcke@arvig.net; telephone @ 218-375-2975.



Recycle your convention bags

This year we will be asking all convention attendees to recycle and reuse their past LWML district convention bags.

Please bring a convention bag that was given to you at a past convention to put all the materials that you gather and will receive in.

A surprise gift will be awarded for the following categories:

- convention attendee with the oldest previously used LWML MN North District convention bag
- convention attendee with the previously used LWML District convention bag that comes from another LWML district the farthest away,
- and the convention attendee with the LWML convention bag from the oldest national convention.

Use all your hunting skills and start looking for your old convention bags.

To help build convention anticipation and enthusiasm at a pre-convention society meeting, members could discuss the bag that they will be bringing to the convention and tell members about its history.

Encourage new attendees by offering to share a previous convention bag with them.

If you have any questions please contact Lynn Lahd, Arrowhead II Regional V.P.



Massages for Mites

Not only do you have a chance to walk towards the mite goal but you can also receive a massage to help towards the mite goal.

This year at our district convention, Scarlet Dittmann from New York Mills will be giving massages for mites.

Scarlet is a national certified massage therapist. She is a long time LWML member and is going to be giving chair massages from 1:00 p.m. to 4:00 p.m. on Monday June 25, at the convention.

A suggested donation of \$10 for each massage will be given towards the 2012-2014 mite goal.

Find her booth on Monday and make an appointment. Scarlet will give you a massage -- and you will be helping with the mite goal!

Prayer & Praise Mite Calendars

Find the calendars for May, June and July posted on our Minnesota North District Website at www.lwmlmnn.org.

Click on "Publications," then "Mite Calendars"

Nominees for LWML MN No. District Board Offices

With prayer, We've searched far and wide -
By phone, by email, by personal contact -
To find candidates for open positions -
Thanks to all those who have given names -
And for God's grace and guidance.

We now submit the following for your prayers and deliberations.

President:

- JoNette Brogaard, Alexandria
- Lori Salvhus, Mahnommen

Corresponding Secretary:

- Chrystal Davis, Holloway
- Tessa Giru, Hackensack

Treasurer

- Jenny Biorn, St. Francis
- LaVonne Schimmelpfennig, Alexandria

Regional Vice President, Arrowhead 1

- Judy Uran, Esko

• _____

Regional Vice President, Lakeland 1

- Doris Weispfennig, Villard

• _____

Regional Vice President, Park Region 1

- No nominations at this time.

Park Region 1 Pastoral Counselors:

- Rev. Robert Behling, Twin Valley
- Rev. Anthony Cloose, Frazee
- Rev. John Ramsbacher, Menahga



Your Nominations Committee:

Karena LaPolice, Sharon Gieske,
Carol Ann Sander, Mary Schirm,
Theresa Warnsholz, Janet Miller
(Board Advisor).

Phyllis Jastram (Chairman)

218-826-6305

phyllis.jastram@gmail.com.

(Please get in touch with us if you have any names for the blanks on our ballot.)

The Face of LWML

What does your neighborhood look like?

Have you found your city or town looking more and more like Revelation 8:9? "After this I looked and there before me

was a great multitude that no one could count, from every nation, tribe, people and language, standing before the throne and in front of the lamb."

Women of the LWML continue to lead the way to embrace and encourage people of other nations. The Heart to Heart Sisters program is the newest way in which the LWML will be reaching out and including all of God's people in the many programs and resources that are available.

Look for Heart to Heart program resources and developments in the Minnesota Northern Light newsletter and online at www.lwmlmnn.org. Find out how women of different ethnicities within northern Minnesota assist others and create an awareness of various cultures.

If your society already includes a woman from another ethnicity who is willing to be part of this program, please contact Sheila Peterson at 218-869-3380.

LWML President Kay Kreklau Shares Vision

- ◇ The Women of LWML celebrates its 70th anniversary - *Serving the Lord with Gladness*.
- ◇ We are women that will learn from and live for Jesus.
- ◇ Take joy in being His voice, hands, and feet. Be a friend, be a listener, be available, reflect Jesus' love, be flexible, be in prayer, be a giver, be an inviter, be intentional, be faithful, be ready, be confident – all in service to Christ Jesus.



Leader Development

One of the many resources we as LWML officers can utilize when looking for ideas and materials to assist us in fulfilling our duties are other LWML district newsletters and websites. These venues offer many good ideas that we can also use.



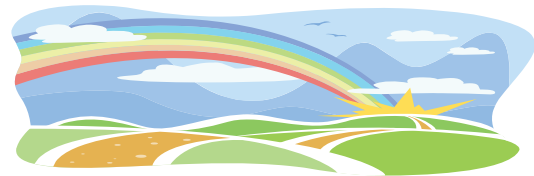
The Indiana District's *Good News* April 2010 edition had a wonderful Leader Development page that I would like to share with you. Please use the following ABC's as you prepare yourself for our 2012 Minnesota North District Convention, "Arise! Shine! Your Light Has Come ..." being held June 25 -27, 2012.

The ABC's of How to Get the Most Out of an LWML Convention

- A - Attend, ask questions
- B - Be on time, bring others
- C - Celebrate with sisters in Christ
- D- Decide to participate, deliver ingathering materials
- E - Elect new officers
- F - Find activities you can do in your church, forgive others
- G - Give to missions
- H - Hug each other
- I - Invite others to come with you
- J - Join into activities joyfully
- K - Keep a good attitude
- L - Learn, listen, laugh, love
- M - Mingle, be mission minded, make mites a priority
- N - Nurture, network
- O - Organize a group to come with you, order resources
- P - Pray for God's blessings on the convention
- Q - Question others to learn more
- R - Rejuvenate yourself, rejoice over God's blessings
- S - Serve, sing in the choir, sing, attend servant events

- T - Talk, teach, tell others about Jesus
- U - Urge others to get involved, use what you've learned
- V - Vote, volunteer, vow to take action
- W - Witness, worship, work, walk
- X - Expect to have a great time, expect to be uplifted
- Y - Yearn to learn more about missions
- Z - Zestfully report about the convention when you get home

"For where two or three are gathered together in my name, there am I in the midst of them ..."
(Matthew 18:20).



Miles for Mites

Write down your odometer reading as you leave for convention, and again as you arrive at the convention. Calculate the number of miles you have driven and give a donation of 10¢ for every mile for our 2012-2014 mite goal.

Additional Miles for Mites challenges:

- * Add \$1.00 if you travel less than 100 miles to the convention.
- * Add 25¢ for every church you pass.
- * Add 25¢ for every lake and river you go by.

Share your Miles for Mites collection at the registration table. Thank you for helping us reach our 2012-2014 mite goal!

Our website has been redesigned by our Webmaster!

Check it out at www.lwmlmnn.org!!



Christian Life – or Human Care

Looking over the district Christian life forms and the zone human care forms from 2011, many activities were listed on both forms. I hope to clarify the difference between the Christian life activities and the human care activities.

Christian Life

Purpose:

- To encourage, equip and nurture believers to become strong in the Lord..
- To be steadfast in faith.
- To be willing to serve the Lord.

“Grow in grace and knowledge of our Lord and Savior Jesus Christ” (1 Peter 3:18 NIV).

Activities include:

- devotions at meetings or other events
- Bible studies
- attending activities such as mission encounters, discipleship workshops
- meeting spiritual needs

When Martha complained to Jesus because Mary was not helping her, He said, *“Martha, Martha, you are worried and upset about many things, but only one thing is needed. Mary has chosen what is better, and it will not be taken away from her”* (Luke 10:41-42 NIV).



Mary Kuh nau
Christian Life
Chairman

It is important to meet people’s needs. *Suppose a brother or sister is without clothes and daily food. If one of you says to him, “Go, I wish you well; keep warm and well fed.’ But does nothing about his physical needs, what good is it?”* (James 3:16-16 NIV).

Human Care

Purpose:

To meet the needs of:

- LWML Sisters.
- Congregational members.
- Community concerns.
- Missions throughout the world.

“Share with God’s people who are in need” (Rom. 12:13 NIV).

Activities include:

- in-gatherings
- making quilts
- contributing to the food shelf
- servant events
- meeting physical needs

Both Christian life and human care are necessary. We need balance. Because of our Christian life, we will want to take care of the needs of others.

Continue to grow in your faith and continue to share with those are in need.

35th Biennial LWML Convention

David L. Lawrence Convention Center

Pittsburgh, Pennsylvania

Thursday, June 27 – Sunday, June 30, 2013

[Jesus said:] "... but whoever drinks of the water that I will give him will never be thirsty again. The water that I will give him will become in him a spring of water welling up to eternal life" (John 4:14).

Visit www.lwml.org/conventions for the latest in Pittsburgh convention news!





Keynote Speaker Cynthia Mehdi Khan People of the Book Lutheran Outreach (POBLO)

As POBLO's Director of Cross-Cultural Ministries and a missionary to Muslims, Cynthia Khan uses various outreach strategies to reach ethnic populations. Her work includes helping churches to start new mission sites, facilitating human care projects and providing training.

Cynthia was born and raised in Pakistan. She has lived in four countries and personally dealt with the people and issues she raises awareness about. She now resides in Troy, Michigan, but is still a dedicated global citizen. She has served within an unusually broad variety of settings in different countries. She is instrumental in POBLO's mission teaching classes such as English as a second language, Arabic as a second Language, International Cooking, international teas and hosting East Meets West Bible studies. She is continuously providing outreach by acting as a resource, connecting new immigrants, refugees and persecuted Christians with social services programs and agencies in the United States.

Cynthia's hands on experience and real life stories makes her presentations very interesting and impacts the attendees in a special way.

Cynthia will also lead a breakout session at the convention on Monday afternoon.



Convention Entertainment Jilleen Butler

Jilleen will be sharing her message of hope and healing after our Tuesday evening banquet at the convention. She is considered to be one of the major defining voices in Christian music today.

In her own words, Jilleen says, "People can relate to the pertinent message in my music. Sometimes we have good days. Sometimes we have bad days. It all depends upon the day! My goal is to enable the listener to experience God in their everyday circumstances, especially in the small things."

For Jilleen, music is the vehicle – God's love is the message. At a time when many Christian music artists are pulled away from ministry and pushed toward "industry" obligations, Jilleen has maintained focus on her life's mission; to be a conduit through her words and songs bringing the message of God's love to a hurting world. Jilleen's ministry is best exemplified through her life verse Mark 12:30 - "Love the Lord your God with all your heart and with all your soul and with all your mind and with all your strength."

Jilleen will also be leading one of the break-out sessions on Monday afternoon of the convention, "PURSEonalties" on emotional wellness for women.

Read more about Jilleen at www.jilleen.com.

2012-2014 Proposed Mission Grants

- A. Christian Education at Dakota Boys and Girls Ranch RRV - \$5,000. This grant will provide Bibles, picture Bibles, workbooks, iPods (with the Bible on them) and other Christian materials to support the Christian Education of youth in the Fargo area.
- B. Orphan Grain Train - \$8,500. This grant will help cover the cost of shipping materials through Orphan Grain Train.
- C. Prince of Peace Lutheran School Tuition Assistance - \$10,000. This grant will be used for tuition assistance to maintain and develop a quality Christ-centered environment for the education of students.
- D. Food and Clothing Co-op, Ft. Wayne - \$10,000. This grant will help provide money to purchase perishable food items for students and their families. Students volunteer time at the Co-op to earn points to redeem for food items.
- E. Vehicles for Pastors and Vicars in Haiti - \$20,000. Three pastors and two vicars need reliable transportation due to the poor condition of roads in Haiti. Assistance is needed for vehicle repairs, plus there are needs for motor bikes and four wheelers to serve the five churches in the Evangelical Lutheran Church of Haiti (ELCH) North District.
- F. Construct Classroom Building in Yambio, South Sudan (LHF) - \$10,000. This grant will construct a two-room classroom for Primary School students. There are over 200 students currently enrolled that receive daily religious instruction from local pastors
- G. Mary Okeyo Student Scholarship Fund for Travel - \$15,000. This fund is used to actively engage young women interested in missions and ministry to apply and take advantage of the partnership that exists between North Dakota District, LCMS, LWML Minnesota North District and the Evangelical Lutheran Church of Kenya.
- H. Servant Events on the Fond du Lac Reservation - \$5,000. Youth from around the country travel to this mission to provide vacation Bible school to hundreds of children on the reservation and do work projects for elders. This grant will help provide food and housing for the groups.
- I. Financial Support and Staff Training for Lutheran Island Camp - \$10,000. The summer staff at Lutheran Island Camp is constantly ministering to campers of all ages. This grant would assist with training, spiritual growth and strengthening of the staff.
- J. Scholarship for Full-Time Church Work Students - \$50,000. To educate and train those who are called for full-time church work vocations at LCMS affiliated Concordia Universities and LCMS Seminaries. Scholarships will be awarded on the basis of financial need, academic standing, and college acceptance.
- K. Scholarships for Men Preparing for Ordination - \$5,000. Financial support is essential for educating men with God-given talents. This grant provides funds to eligible men from Minnesota North District congregations that are studying to be pastors.
- L. Anyuak Ministry, Sauk Rapids - \$5,000. This ministry is three years old and is bearing fruit. These funds would be used to start a Sunday school and recruiting and training elders to assist John Bakou, who is currently a seminary student and will become a vicar in the fall of 2012.
- M. Christian Story Books for SE Asia (LBT) - \$1,000. Funds will be used to print 500 story books at a local printer in Thailand at a cost of \$2.00 each. These books keep the Khon literacy alive and support access to the scripture for the Khon church by developing materials to teach the Khon how to read and write in their own language as a tool to spread the gospel.



LWML Minnesota North District
 25th Biennial Convention June 25 - 27, 2012
 Breezy Point Resort • Breezy Point, MN

REGISTRATION FORM
 PLEASE PRINT CLEARLY
 FILL OUT BOTH SIDES OF FORM

Name: _____ Date: _____

Address: _____
 _____ State: _____ Zip: _____

Phone: _____ Email: _____

Emergency Contact: _____ Phone: _____

Region: _____ Zone: _____

Society: _____

Congregation Name: _____

Church Address: _____
 _____ State: _____ Zip: _____

CONVENTION PACKAGES		Cost Before	Cost After	Amount
Convention package includes registration and packet.		May 25 th	May 25 th	
Full Convention Registration		\$80	\$90	\$
Young Women Representatives		\$65	\$75	\$
Past Presidents		\$65	\$75	\$
Clergy (Free Registration) Must pay for meals.				
Convention Workers and Nuclei Committee		\$40	\$50	\$
Part-Time (One day attendance, includes packet.)		\$25	\$35	\$
MEAL PACKAGES ARE SOLD SEPARATELY				
Full Meal Package (ages 12+) (Meal info is on back of form.) Monday: Evening Buffet • Tuesday: Breakfast, Lunch, and Dinner Banquet • Wednesday: Breakfast and Lunch on the Go			\$ 95	\$
ADDITIONAL MEAL OPTIONS		QTY		
Child Full Meal Package (ages 5-11)			\$ 50	\$
Tuesday	Dinner Banquet Adult (ages 12+)		\$ 30	\$
	Dinner Banquet Child (ages 5-11) (Menu - Chicken Strips and Fries)		\$ 16	\$
CHILD CARE				
(Includes Tuesday Lunch, additional meals not included.)		QTY		
Child Care - Full Convention			\$ 25	\$
Child Care - Part Time - \$10/child per day			\$ 10	\$
Total Amount of Check Enclosed				\$

- Check all titles that apply to you.**
- Delegate
 - Guest
 - Nominee
 - Young Woman Rep.
 - District Board Member
 - Zone President
 - Past District President
 - Speaker
 - Exhibitor
 - Clergy
 - Nuclei Committee
 - Worker
 - Other _____

Convention Activities
 Will you participate in the Mass Choir? Yes No
 Soprano Alto

Will you participate in the **SON Rise Mite Walk**?
 Yes No

IMPORTANT → If you are a delegate, please list your **ALTERNATE'S** name. _____

ALL DELEGATES MUST REGISTER BEFORE MAY 25th
 Only one registrant per form. Every adult is expected to register.

CHILD CARE: Number of Children _____ (*List names and ages below*)

Do you have any special needs? (*Disabilities, Food Allergies, Wheelchair, etc.*)

BREAKOUT SESSIONS: The following Breakout Sessions will be offered on Monday, June 25th. Sessions begin at 1:00 p.m. and at 2:30 p.m. Each session is 75 minutes in length and will be presented twice. Please indicate your first choice (1); and second choice (2).

- Crossing Barriers-Building Bridges** presented by *Cynthia Khan* • Learn about the basics of Islam. How do you overcome your fears, establish cross cultural friendships and be an effective witness among Muslims and other non-Christian women.
- LWML 101** presented by *Edie Norris, LWML Public Relations Director* • Are you new to LWML, unsure of what all the acronyms mean? Or 'seasoned' in the LWML, and still unsure about all of the titles and acronyms? Then this is the place to be! Learn about the structure of the LWML and the committees and resources that are available to you as we 'Serve the Lord with Gladness!'
- PURSEsonalities** presented by *Jilleen Butler* • "What's in your purse? What do you carry around in your every day bag? Discover how the very simple items in your purse, such as your keys (we hold the keys to our families' hearts), lipstick (we need to be wise with our words) and cell phone (we have access to God 24 hours a day, seven days a week through prayer), can remind you of God's love and teach you how to nurture the most important relationships in your life."
- Be, Know, Do – Serving Through Action** presented by *Chaplain Eric Erkinen* • Leadership is about taking action, but there's more to being a leader than just what you do. Character and competence, the BE and the KNOW, underlie everything a leader does. Becoming a leader involves developing all aspects of yourself. We will explore Ephesians 5:15-20 and learn how leaders today are to let their light shine through action.
- Heart to Heart Sisters** presented by *Sheila Peterson* • Through the sharing of ideas with other cultures we will not only learn from others but have a great time in the process. Come and catch the 'multicultural fever' that has been bringing new life and energy to our churches.

MEAL INFO
(Full Meal Package)

Monday "Dinner Buffet"

Italian Buffet
Ceasar Salad
Fresh Fruit Platter
Vegetable duJour
Garden Cole Slaw
DG Rotini Salad

Tuesday Breakfast

Tuesday "Lunch Buffet"
"Build Your Own" Deli
Sandwich and Soup Buffet

Tuesday Dinner "Banquet"

Porterhouse Pork Chop
Spinach Salad
Honey Glazed Carrots
Chocolate Tiger Layer Cake

Wednesday Breakfast

Wednesday "Lunch on the Go"

Deli Style Sliced Ham/
Monterey Jack
Chips
Apple
Chocolate Chip Cookie



HOUSING INFORMATION

ROOM COST \$90.00/night + tax

You are responsible for your own housing arrangements!

When making reservations, call **Breezy Point Resort** directly. Contact Sylvia Swanson at **(218) 562-7160** and state you would like a room for the **"LWML MN NORTH DISTRICT CONVENTION"**.

Please make a copy of this form for your records before you mail it. Registration deadline is May 25th **Refund deadline is June 11th** (*except delegates, no refund*). Please enclose the total remittance.

Any questions? Call **Marilyn** at: **(320) 387-2219**

Make Checks Payable To:

LWML MN North District (not to an individual)

Mail Registration Form and check to:
Marilyn Hiltel, Convention Registrar
6850 Golden Spike Rd
Sauk Rapids, MN 56379

For more convention info visit the District website: www.lwmlmn.org

2012 Convention Registration Form

ARTICLE I – NAME

Rationale: To clarify and comply as directed by LWML and their financial advisors.

PROPOSED AMENDMENT

Strike “The Lutheran Women’s Missionary League (hereinafter referred to as LWML) Minnesota North District (hereinafter referred to as District) is composed of societies within the congregations of the Minnesota North District of The Lutheran Church—Missouri Synod (hereinafter referred to as LCMS).”

Insert “The name of this organization shall be Lutheran Women’s Missionary League Minnesota North District (hereinafter referred to as District), a subordinate organization of the Lutheran Women’s Missionary League (hereinafter referred to as LWML) as an integrated auxiliary of The Lutheran Church—Missouri Synod (hereinafter referred to as LCMS).

IF ADOPTED WILL READ

~~The Lutheran Women’s Missionary League (hereinafter referred to as LWML) Minnesota North District (hereinafter referred to as District) is composed of societies within the congregations of the Minnesota North District of The Lutheran Church—Missouri Synod (hereinafter referred to as LCMS).~~

The name of this organization shall be Lutheran Women’s Missionary League Minnesota North District (hereinafter referred to as District), a subordinate organization of the Lutheran Women’s Missionary League (hereinafter referred to as LWML) as an integrated auxiliary of The Lutheran Church—Missouri Synod (hereinafter referred to as LCMS). These societies are united to form zones, zones to form regions, and regions to form the district.

ARTICLE II – OBJECT

Rationale: To be consistent.

PROPOSED AMENDMENT

b. Strike “LWML Minnesota North”

IF ADOPTED WILL READ

b. to gather and distribute funds for mission grants either directly sponsored or approved by the ~~LWML Minnesota North District~~ and LCMS, especially such for which no adequate provision has been made in the LCMS budget;

ARTICLE III – MEMBERS

Rationale: To clarify and simplify.

PROPOSED AMENDMENT

Section 1 Insert “District”

Section 3 Strike “LWML”

Section 4 Strike “LWML”

IF ADOPTED WILL READ

Any women’s organization within the congregations of the LCMS desiring membership in the LWML shall present its written application to the District Corresponding Secretary. Each society is eligible to receive such a certificate of membership.

Women who hold communicant membership in an LCMS congregation may form a society in a setting other than a congregation, a campus, or a resident home upon approval of the District ~~LWML~~ Executive Committee.

Each society of the District ~~LWML~~ should strive to enlist all women of the congregation in the LWML program. Any woman who participates by promoting the object of the LWML is eligible to become a member of the society.

ARTICLE IV – DISTRICT ORGANIZATION

Rationale for a and c: To simplify.

Rationale for b: Clarification of rally ingatherings and conform to practice.

PROPOSED AMENDMENT

Section 2

- a. 2nd Sentence Strike "LWML"
- b. Add new Sentence 5: "No monies shall be collected as ingatherings or other special offerings at zone events."
- c. Strike "LWML"

IF ADOPTED WILL READ

Section 2

- a. Variations in boundaries shall be referred to the District ~~LWML~~ Board of Directors for decision.
- b. No monies shall be collected as ingatherings or other special offerings at zone events.
- c. The zone president shall attend the District ~~LWML~~ convention at the expense of the zone.

ARTICLE V – CONVENTIONS AND REPRESENTATION

Rationale: To clarify, simplify, be consistent, and fix typographical error.

PROPOSED AMENDMENT

Title

Add "District"

Section 1

- a. Strike "LWML"
- c. Strike "LWML"
- d. Strike "Minnesota North LWML publication" and Insert "District newsletter"

Section 2

- c. Strike "Any LWML member of the District is entitled to a voice."

Add new Section 3 "Any LWML member of the District is entitled to a voice, but no vote."

Section 4 Becomes new Article VI "LWML CONVENTIONS AND REPRESENTATION"

- c. Strike "LWML"
- e. Strike "LWML"
- * Separate often – "of ten"

IF ADOPTED WILL READ

Title

DISTRICT CONVENTIONS AND REPRESENTATION

Section 1

- a. District ~~LWML~~ Conventions shall be held biennially in the even-numbered years.
- c. The time, accommodations, schedules, and facilities shall be determined by the District ~~LWML~~ Board of Directors and host region.
- d. The societies shall be notified of the time and place of the convention through the pages of the official ~~Minnesota North LWML publication~~ District newsletter at least sixty (60) days prior to the convention.

Section 2

- c. voting members of the Board of Directors. ~~Any LWML member of the District is entitled to a voice.~~

Section 3 Any LWML member of the District is entitled to a voice, but no vote.

ARTICLE VI

LWML CONVENTIONS AND REPRESENTATION

- c. The names of the delegates and the alternates shall be presented to the District ~~LWML~~ President for certification.
- e. ...in writing by the District ~~LWML~~ President and presentation to the LWML Recording Secretary.
- * A major fraction of ten (10) is defined as six (6) or more.

ARTICLE VI – OFFICERS

Rationale: To simplify and conform to current practice.

PROPOSED AMENDMENT

Section 1

Strike “LWML”

Section 2

d. Strike “deliver” and Insert “transfer”

e. Strike “deliver” and Insert “transfer”

IF ADOPTED WILL READ

Section 1

The elected officers shall be a President, an Executive Vice President, Regional Vice Presidents from each region one (1) or more as needed and approved by the District ~~LWML~~ Board, etc.

Section 2

d. The retiring financial officers shall, within sixty (60) days following the convention, ~~deliver~~ transfer to their successors...

e. All other officers shall, within thirty (30) days following the convention, ~~deliver~~ transfer to...

ARTICLE VII – DUTIES OF OFFICERS

Rationale: To simplify.

PROPOSED AMENDMENT

Section 1

a. Strike “LWML”

e. Strike “LWML”

f. Strike “LWML”

h. Strike “LWML”

Section 3

a. Strike “LWML”, Insert “,”, Strike “and LWML”

Section 4

a. Strike “LWML”

Section 6

a. Strike “LWML”

Section 7

a. Strike “LWML”

d. Strike “LWML”

IF ADOPTED WILL READ

Section 1

a. preside at all District ~~LWML~~ Conventions...

e. ...resolutions passed by the District ~~LWML~~ Board of Directors...

f. ...all new District ~~LWML~~ societies and...

h. be bonded at the expense of the District ~~LWML~~ for an amount...

Section 3

a. be a liaison between the ~~LWML~~ District Board of Directors, ~~and LWML~~ zones and societies and give a written and oral report of information from the ~~LWML~~ District Board of Directors' quarterly meetings;

Section 4

a. keep a record of the proceedings of District ~~LWML~~ Conventions,...

Section 6

a. be bonded at the expense of the District ~~LWML~~ for an amount...

Section 7

a. be bonded at the expense of the District ~~LWML~~ for an amount...

d. make all payments authorized by the District ~~LWML~~ President,...

ARTICLE VIII – NOMINATIONS

Rationale: To simplify.

PROPOSED AMENDMENT	IF ADOPTED WILL READ
Section 1 a. Strike "LWML"	Section 1 a. ...in the summer preceding the District LWML Convention.
f. Strike "official publication of the Minnesota North" and "LWML"	f. The report of the Nominating Committee shall be published in the official publication of the Minnesota North District LWML newsletter issued prior to the convention.

ARTICLE IX – APPOINTED PERSONNEL

Rationale: To be consistent, fix grammar, simplify and clarify the title of the duties performed.

PROPOSED AMENDMENT	IF ADOPTED WILL READ
Section 1 Strike "Webmaster" and Insert "Information Technologist"	Section 1 The appointed personnel shall be the Editor, Archivist-Historian, and Webmaster <u>Information Technologist</u> , appointed by...
Add new c. "report to the Board Directors at each meeting."	c. <u>report to the Board of Directors at each meeting.</u>
Section 2 a. Strike "LWML"	Section 2 a. be a member of the District LWML ;
c. Strike "LWML" and "news in the official Minnesota North publications." Insert "newsletter and also provide District news for the Minnesota North Lutheran Witness Supplement."	c. be responsible for publication of the official LWML District <u>newsletter</u> and also <u>provide District news for the Minnesota North Lutheran Witness supplement.</u>
Add new d. "be responsible for the District Convention publication."	d. <u>be responsible for the District Convention publication.</u>
Section 3 a. Strike "LWML"	Section 3 a. be a member of the District LWML ;
b. Strike "LWML"	b. bring the history of the District LWML of the up-to-date...
c. Strike "for" and Insert "of"	c. collect and preserve documents and other items for <u>of</u> historical interest;
Section 4 Strike "Webmaster" and Insert "Information Technologist"	Section 4 The Webmaster <u>Information Technologist</u> shall:

ARTICLE X – SPECIAL APPOINTED PERSONNEL

Rationale: To simplify.

PROPOSED AMENDMENT	IF ADOPTED WILL READ
a. Strike "LWML"	a. ...at the request of the District LWML President;
b. Strike "LWML"	b. attend District LWML Conventions in an advisory capacity;

ARTICLE XI – BOARD OF DIRECTORS

Rationale (Section 2): To offer additional means for the Board of Directors to conduct business.

Rationale (Section 4): To simplify, clarify and be consistent.

PROPOSED AMENDMENT

Section 2

Add new c. "Business may be conducted by mail or electronic messaging."

Section 4

a. Strike "LWML"

f. Strike "appoint" and Insert "approve the appointed" and Strike "an" and "Webmaster"
Insert "Information Technologist"

IF ADOPTED WILL READ

Section 2

c. Business may be conducted by mail or electronic messaging.

Section 4

a. to transact the business of the District ~~LWML~~ in the interim between conventions;

f. to ~~appoint~~ approve the appointed an Editor, an Archivist-Historian, ~~Webmaster~~ Information Technologist, standing committees, ...

ARTICLE XII – EXECUTIVE COMMITTEE

Rationale: To specify required members present.

PROPOSED AMENDMENT

Section 1

Strike "one (1)" and Insert "the senior"

IF ADOPTED WILL READ

Section 1

... Financial Secretary, Treasurer, and ~~one (1)~~ the senior Pastoral Counselor.

ARTICLE XIII – PASTORAL COUNSELORS

Rationale: To simplify and be consistent with current wording.

PROPOSED AMENDMENT

Section 1

a. Strike "Conference" and Insert "Region"

IF ADOPTED WILL READ

Section 1

a. The Pastoral Counselors shall be three (3) pastors, one (1) from each LCMS ~~Conference~~ Region of the Minnesota North District...

Section 2

a. Strike "LWML"

Section 2

a. serve the District ~~LWML~~ in an advisory capacity;

LWML Minnesota North District Bylaws state in Article XXI AMENDMENTS,

"These bylaws may be amended by a two-thirds (2/3) vote of the members present and voting at the biennial convention, provided the proposed amendments have been presented for consideration to the Board of Directors, approved by the LWML Structure Committee, and published in the official Minnesota North LWML publication in an issue previous to the convention. By unanimous vote a proposed amendment may be presented to the convention without previous notice. A three-fourths (3/4) vote shall be required for adoption."

ARTICLE XIV – COMMITTEES

Rationale: To simplify and comply with LWML bylaws.

PROPOSED AMENDMENT

IF ADOPTED WILL READ

Section 1
a. Strike "Advocacy and"

Section 1 a. The standing committees shall be Christian Life, Human Care, Leader Development, Mission Advocacy and Grants, Public Relations, and Structure.

Section 2
c. Strike "LWML" and Insert "District"

Section 2 c. keep the Word of God as a focal point in all ~~LWML~~ District meetings and activities;

Section 4 c. Strike "LWML"

Section 4 c. conduct workshops and training session as requested by the District ~~LWML~~ Board, regions, zones, or societies.

Section 5
Strike "Advocacy and"

Section 5
The Mission ~~Advocacy and~~ Grants Committee...

Section 6
b. Strike "LWML"

Section 6 b. promote and publicize programs and events of the District ~~LWML~~;

Section 7
a. Strike "LWML"

Section 7
a. study the bylaws of the District ~~LWML~~ and submit to the Board of Directors...

b. Strike "LWML"

b. ...those not in conflict with the District ~~LWML~~ bylaws;

Section 8 Strike "LWML"

Section 8 There may be such other committees as the District ~~LWML~~ Board of Directors or the...

ARTICLE XV – MISSION GRANT PROPOSALS AND GRANTS

Rationale: To simplify and comply with LWML bylaws.

PROPOSED AMENDMENT

IF ADOPTED WILL READ

Section 1 Strike "LWML" and "biennial"
Insert "District"

Section 1 Appeals for mission grants shall be submitted to the Grants Chairman of the District ~~LWML~~ by February 15, prior to the ~~biennial~~ District Convention.

Section 2
Strike "Advocacy and"
and "LWML" in 2nd paragraph.

Section 2
After preliminary study by the Mission ~~Advocacy and~~ Grants Committee, ...consideration of the District ~~LWML~~, they shall be presented to the District ~~LWML~~ Board of Directors...

Section 4 Strike "LWML"

Section 4 ...or be returned to the District ~~LWML~~ treasury of four (4) years...

Section 5 Strike "LWML"

Section 5 In the event that a gift for foreign missions is to be considered as a grant by the District ~~LWML~~, it shall first have been cleared through the LCMS World Mission office. If then the District ~~LWML~~ adopts such a foreign mission grant,...

ARTICLE XVII – FINANCES

Rationale: To simplify, be consistent, and insure District Pastoral presence at LWML conventions.

PROPOSED AMENDMENT	IF ADOPTED WILL READ
Section 1 2nd Paragraph – Strike “LWML”	Section 1 The District LWML shall remit...
Section 2 a. Strike “LWML”	Section 2 a. ...incurred in the management of the District LWML shall be paid from the treasury.
Section 3 Last sentence – Add “and one Pastoral Counselor.”	Section 3 ...giving priority to the President and newly elected/ appointed board members <u>and one Pastoral Counselor.</u>
Section 4 d. Strike “LWML”	Section 4 d. After grants have been made, the responsibility of the District LWML ceases.
e. Strike “Minnesota North LWML publication” and Insert “District newsletter”	e. Reports on the progress of the work made possible by grants shall be published in the official Minnesota North LWML publication <u>District newsletter.</u>

ARTICLE XVIII – FISCAL YEAR

Rationale: To simplify.

PROPOSED AMENDMENT	IF ADOPTED WILL READ
Strike “LWML”	The fiscal year of the District LWML shall be from April 1...

ARTICLE XIX – EMERGENCY ACTION

Rationale: To simplify.

PROPOSED AMENDMENT	IF ADOPTED WILL READ
End of 1st Sentence Insert “, FAX or email.”	In the event of any... the Executive Committee shall decide and vote may be taken by mail, <u>FAX or email.</u>

ARTICLE XX– PARLIAMENTARY AUTHORITY

Rationale: To simplify.

PROPOSED AMENDMENT	IF ADOPTED WILL READ
Strike “LWML”	... proceedings of the District LWML in all cases to which...

ARTICLE XXI – AMENDMENTS

Rationale: To be consistent.

PROPOSED AMENDMENT	IF ADOPTED WILL READ
Strike “Minnesota North LWML publication” and Insert “District newsletter”	...and published in the official Minnesota North LWML publication <u>District newsletter</u> in an issue...

STANDING RULES

Rationale: To simplify and to ensure that the duties of the District President are carried out effectively.

PROPOSED AMENDMENT

I. BOARD MEMBER STATUS

1st Paragraph Strike "LWML"

2nd Paragraph

Strike "LWML" Change "office" to "offices" Insert "and Executive Vice President" Strike "that" Insert "each"

IF ADOPTED WILL READ

I. BOARD MEMBER STATUS

Any person standing for an office of the District LWML Board, as well as being...

Anyone standing for the offices of District LWML President and Executive Vice President must have previously held an office on the District LWML Board in order to be familiar with the many responsibilities involved in that each particular office.

Check these out at www.lwml.org

The HOPE (Helping Organizations Participate Effectively) Committee is offering two articles that will encourage the women in your society to take a new look at the purpose and mission of the LWML group in your congregation. Go to www.lwml.org/resources/hope-committee/

- "Is Your LWML Group 'Brain Friendly'?" As we plan LWML activities, we can make our meetings, events, and even our Bible studies more "brain-friendly."
- "How to be a 'Pillar' in Your Group." A pillar is an object used to support a structure. In organizations such as the LWML, "pillars" are members who are prominent supporters that set an example for the others in the group to follow.

The Structure Committee offers the article, "You are the Convention Delegate." This is a great piece which details key items of interest to delegates as they represent their LWML group.

A new DVD Bible Study Series, "Your Strong Suit" is available. This eight-session Bible study is based on Ephesians 6:10-18. Presented with state-of-the-art filming and stunning graphic design, this study promises to be a favorite with churches who invest in it and spiritually enrich those who use it.



2012 LWML RETREAT

"The greatest of these is love." | Corinthians 13:13b NIV



LWML Retreat August 10-12, 2012 at Lutheran Island Camp

Pastor Don Stauty of Virginia, MN will lead our Bible study. He is serving as one of the District LWML Pastoral Counselors and has

been an LWML Zone counselor since 2007. He serves both Gloria Dei and Redeemer churches.

Pastor Bernie Seter from Grafton, ND, will be speaking about Project 24 in Kenya, Africa. To learn more about the building of orphanages in Kenya, go to his webpage (www.northerncrossingsmercy.org).

Messiah's Minnesota Minutemen will be entertaining us with dramas. They are a group of actors and actresses of all ages and backgrounds from across the state of Minnesota. Some live north of Bemidji and some live south of Redwood Falls.

Attention: Mothers of 3 to 8 year old children. Looking for childcare? LIC has 3 programs; *Little Lambs*, *Sheep Camp*, and *Discovery Camp*. They will run simultaneously with the LWML Retreat. For more details about these programs and to register your child(ren), go to: islandcamp.org

4-6:00 pm Registration
6:30 pm Evening Activities
8:30 pm Campfire
9:30 pm Snacks in the Fireside room

FRIDAY EVENING

7-8:00 am Registration
8:00 am Breakfast
9:00 am Singing
9:15-10:15 Bible study - *Pastor Stauty*
10:15-10:30 Break
10:30-11:30 Speaker - *Pastor Seter*
12 noon Lunch
1-2:00 pm Speaker - *Pastor Seter*
2-3:00 pm Prayer
2-5:00 pm Free time
5:00 pm Dinner
6:30 pm Entertainment: *Messiah's Minnesota Minutemen*



SUNDAY

8:00 am Continental breakfast
10:00 am Worship
11:00 am Brunch and farewell

For more information contact:
Mary Kuhnau at christianlife@lwmlmnn.org or
(320) 834-2135. Please visit the District website for updates: www.lwmlmnn.org

ITEMS TO BRING:

- Bible
- Flashlight
- Clothes for Sun or Rain
- Insect Repellent
- Towel & Washcloth
- Toiletries
- Pillow, Bedding or Sleeping Bag

CUT HERE CUT HERE CUT HERE

2012 LWML Retreat
August 10-12, 2012
Lutheran Island Camp
"The greatest of these is love."
I Corinthians 13:13b NIV



Name : _____
Address : _____
Phone : _____
Email : _____
Special Needs : _____
Roommates : _____

Registration Deadline: August 1, 2012
(There will be an additional \$10 fee for late registration.)

(√ Check)	Before Aug. 1 st	After Aug. 1 st
<input type="checkbox"/> Friday-Sunday	\$99	\$109
<input type="checkbox"/> Friday-Saturday	\$62	\$72
<input type="checkbox"/> Saturday Only	\$35	\$45

Choose your housing preference:
 Cabin Retreat Center

Make Check Payable To: **LWML MN North District**
Send Registration To: Mary Kuhnau
1536 71ST St NW
Alexandria, MN 56308

Minnesota Northern Light
c/o Kristin Olsen, Editor
506 - 4th Street SE
Little Falls, MN 56345

The *Minnesota Northern Light* is published quarterly by the LWML Minnesota North District following the meeting of the Board of Directors in January, April, July and October.

The deadline for articles in the *Minnesota Northern Light* are: March 15, June 15, September 15, and December 15.

Please send your
e-Subscription request to:
editor@lwmlmn.org

LWML MINNESOTA NORTH DISTRICT BOARD OF DIRECTORS

Executive Committee

President:

Cheryl Petersen, 218-685-6218
president@lwmlmn.org

Executive Vice President:

Mary Kuhnau, 320-834-2135
christianlife@lwmlmn.org

Recording Secretary:

Lynnette Roshell, 651-233-7226
recordingsec@lwmlmn.org

Corresponding Secretary:

JoNette Brogaard, 320-846-0984
correspondingsec@lwmlmn.org

Financial Secretary:

Marilyn Hiltel, 320-387-2219
financialsec@lwmlmn.org

Treasurer:

Marlys Knutson, 218-426-4301
treasurer@lwmlmn.org

Regional Vice Presidents

Arrowhead I:

Dorothy Abrahamson, 218-885-2368
gospeloutreach@lwmlmn.org

Arrowhead II:

Lynn Lahd, 651-245-6552
leaderdevelopment@lwmlmn.org

Lakeland I:

Doris Weispfennig, 320-554-3324
structure@lwmlmn.org

Lakeland II:

Janet Hasbargen, 320-563-4962
publicrelations@lwmlmn.org

Park I:

Ellen Strickler, 218-281-5946
humancare@lwmlmn.org

Park II:

Linda Jeske, 320-594-3034
scholarships@lwmlmn.org

Pastoral Counselors

Arrowhead Region:

Rev. Don Stauty, 218-741-1977 (O),
218-749-5541 (H)
gloriadeipastor@gmail.com

Lakeland Region:

Rev. Ronald Hobbie, 320-269-9229
sjtlparish@mvtvwireless.com

Park Region:

Rev. Henry Koopmann,
218-768-3198 (O), 218-768-3602 (H)
oslutheranmcg@frontier.com
hjkoopman5@hotmail.com

Appointed Personnel

Editor: Newsletter/Lutheran Witness

Kristin Olsen, 320-632-1773
editor@lwmlmn.org

Archivist-Historian:

Janet Miller, 218-768-2882
historian@lwmlmn.org

Webmaster:

James Wagner, 218-289-2457
webmaster@lwmlmn.org

Websites:

LWML: www.lwml.org
LWML Minnesota North:
www.lwmlmn.org

Committee Chairmen

Christian Life: Mary Kuhnau

Human Care: Ellen Strickler

Mission Advocacy & Grants: Dorothy Abrahamson

Structure: Doris Weispfennig

Leader Development: Lynn Lahd

Scholarships: Linda Jeske

Young Women: Lynnette Roshell

Public Relations: Janet Hasbargen