



"Serve the Lord with Gladness..." Psalm 100:2

Greetings in the name of Jesus Christ!

We have started planning for the next LWML Minnesota North District convention. It will be held at the Courtyard by Marriott in Moorhead, Minnesota, on June 20-22, 2022. The theme is "Drawn to the Cross". Our convention Bible verse is *Be strong and courageous. Do not be frightened, and do not be dismayed, for the LORD your God is with you wherever you go* (Joshua 1:9). Our keynote speaker will be Debbie Griffith from International Falls, Minnesota. She is a speaker, writer, radio girl; she has a one minute radio spot ("Everyday Matters") on about 100 radio stations. She overflows with joy, enthusiasm, and fun, and wants us to experience the same. Debbie motivates us to see the blessings of life and how God's grace makes all the difference. Her website is debbiegriffith.com.



The annual LWML Retreat at Lutheran Island Camp is coming up quickly— August 13-15. The theme of the 2021 Retreat is "The Way Home." This is a study of the book of Ezra with Pastor Bruce Timm leading the study. I encourage you all to try to attend this event. It's a weekend of being in God's Word, relaxing, connecting with old friends, and making new friends. I look forward to seeing you all there!

Continue to pray, praise and share the many blessings we have. Remember whose daughter you are!!!

In His Service,
Kathy Brandt
President, LWML Minnesota North District

The *Minnesota Northern Light* newsletter is published quarterly. Article submission deadline is December 15, March 15, June 15 and September 15. Sign up to receive the newsletter online. Go to lwmlmnn.org and look for the Subscribe button.



2021 UPCOMING EVENTS	2
STRUCTURE	3
LWML 39th Biennial CONVENTION	4
CHRISTIAN LIFE	5
YOUNG WOMEN	6
MEMORIALS & HONORARIUMS	7
SCHOLARSHIPS	7
MISSION GRANTS REPORT	8
HUMAN CARE	8
LEADER DEVELOPMENT	9
LWML Minnesota North District Board of Directors	10



2021 UPCOMING EVENTS	
Sept 15	Minnesota Northern Light Fall Issue articles due
Oct 12	BOD Meeting
Oct-Nov	Fall Rallies
Nov 15	Group Reports due to Zone Officers
Dec 1	Zone Reports due to District Officers

2022 CONVENTION June 20-22, 2022

The 2022 LWML Minnesota North District Convention will be held June 20-22, 2022, at the Courtyard by Marriott in Moorhead, Minnesota. The keynote speaker will be Debbie Griffith from International Falls, Minnesota. Debbie has a one minute radio talk "Everyday Matters" heard on over 100 radio stations. She is a story teller, humorist, and most importantly, a speaker who wishes to share the joy of following Jesus Christ. More details will follow in the months to come.

Be strong and courageous. Do not be frightened, and do not be dismayed, for the LORD your God is with you wherever you go (Joshua 1:9b).



Mustard Seed Devotions can be sent directly to your email daily. Visit www.lwml.org/mustard-seed-devotions to sign up.

STRUCTURE

Carla Patton, Chairman • structure@lwmlmnn.org • 320-380-5775

Committee Members

Rev. Bruce Timm, Pastoral Counselor • Leone Blommer • Pearl Dohrmann • Phyllis VanBuren

Procedure for Disbandment/Inactive Status of Groups

But everything should be done in a filling and orderly way. (1 Corinthians 14:40)

During the last year, some of our LWML groups have requested to disband or go inactive. Their intent is to join another group in their congregation or continue with a group that is active. The following will guide you through the process to complete the procedure.

- 1) If the situation cannot be resolved, the group is to do the following:
 - a) Write a letter to the District President, stating your desire to be inactive.
 - b) Within the letter give the reason for becoming inactive. (Church closure, low membership, aging membership, etc.)
 - c) Include the date this becomes effective.
- 2) Upon receiving the letter, the District President will:
 - a) Notify the group that the request has been made.
 - b) Notify the LWML President using the Group Disbandment Form.
 - c) Notify the following people of the change of status of the group: Regional Vice President, Zone President, Corresponding Secretary, Archivist-Historian, Financial Secretary, Structure Chairman.
- 3) Upon receiving the notification from the District President that she has received the letter the group will do the following:
 - a) Distribute the money in the treasury appropriately. Check the bylaws and if there is a direction listed in the bylaws on how to distribute the money, the bylaw must be followed. If there is no bylaw to indicate disbursement, we recommend that the money be sent to the District for Mites.
 - b) Request approval from another group to join their LWML group. Sometimes this is within the same church. However, it can be any group in the zone. Members of the group going inactive may also want to become Individual Members.

Please keep in mind that nothing ever stays the same. An inactive group may, in a few years, want to become active again. This occurs for many reasons and may happen when members of a group that meet in the evening get older and do not want to go to meetings in the dark or be out late. The process to activate a group is much easier to complete than beginning a new group.

God Bless you all on your journeys through LWML.

Personnel Changes

Arrowhead II Regional Vice President and Structure Chairman, Carla Patton, has resigned, as she is moving out of the state. Carla has served 7+ years in this position and we will miss her. We are grateful to her for all she has done!

Karena Lapolice has been appointed as Arrowhead II Regional Vice President and

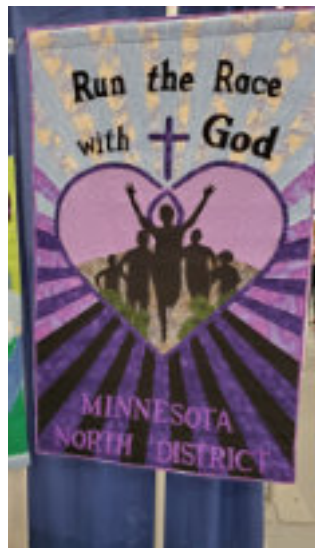
Structure Chairman. Karena has resigned her position as Editor, but will be continuing to serve as Editor until a replacement is found.

These changes are in effect as of July 13, 2021. Our District is very blessed to have so many willing and capable ladies to assume these duties.

Thank you to Carla Patton and Karena Lapolice!

LWML 39TH BIENNIAL CONVENTION

Lexington, Kentucky June 24-27, 2021



The LWML welcomed 2,787 people to the LWML Convention in Lexington, Kentucky, June 24-27, 2021, under the theme “*Running the Race ... Looking to Jesus.*” The convention theme was based on Hebrews 12:1-2. The voting body adopted a \$2,150,000 mission goal for the 2021-2023 biennium. This goal, by the grace of God, will fund 28 mission grants as women and men respond in prayer and mites during the next two years. LWML Minnesota North District contributes \$0.25 of every dollar collected to this mission goal. The list of LWML mission grants selected are available at www.lwml.org/mission-grants.

There were over 60 participants (see photo) attending from LWML Minnesota North District! A photo of the LWML Minnesota North District banner is also attached. One bus of participants from LWML Minnesota North District and LWML North Dakota District made the trip and stopped at The Ark Encounter on the return trip.

To view convention activities, go to www.lwml.org/2021-convention.

One of our District attendees at convention lost her purse the first day! She retraced her steps looking for it. She had made a purchase at one of the vendors in the Exhibit hall and noticed when she got back to the convention floor that the purse was missing. The purse held everything she needed; car keys, ID's, drivers license, credit card, cash, and her medical insurance cards. She was so upset and even though she went back to the vendors to look, that purse was no where to be found. We were afraid it



had accidentally gotten into the garbage or in a box that was hauled away. The next day the delegation gathered together around her and prayed for help to find her purse. We took up a collection for her so she had some cash to get food. At 5 p.m. that afternoon she was contacted that her purse had been turned in to Lost and Found. A lady had dumped out her shopping bag in her hotel room to pack her purchases into her suitcase and there was the purse!! She determined whose it was and brought it to Lost and Found. Needless to say our LWML sister was so relieved!!! We gathered again for a prayer of thanksgiving and we sang the Doxology in praise to God for the return of her purse. In addition, the money from the collection for her is going to Mites in thanksgiving and praise!! Our God is awesome and a very present help in trouble!!

CHRISTIAN LIFE

Corles Rainer, Chairman • christianlife@lwmlmnn.org • 320-743-2131

Committee Members

Rev. Bruce Timm, Pastoral Counselor • Jolene Henning • Karena Lapolice • Doris Schroeder • Ruth Thompson

LWML MN North District Retreat

Dates: August 13-15, 2021

Location: Lutheran Island Camp, Henning, MN

The annual LWML MN North District Retreat provides an opportunity to relax and renew with our LWML sisters while focusing on the Word of God.



On Friday evening, Rev. Bruce Timm, Redeemer – St. Cloud, Arrowhead Pastoral Counselor, will lead a Bible study titled “Heaven is My Home?”.

Saturday’s retreat topic is “The Way Home.” This will be a study of the book of Ezra, led by Pastor Timm. **Participants are encouraged to read Ezra prior to the retreat.**

In addition to relaxing in God’s nature and visiting with friends, there will be demonstrations, crafts and games that participants can enjoy throughout the weekend. And, of course, there will be campfires, singing, and food.

A registration form can be found on the LWML MN North Website or at the end of this newsletter.

LWML Sunday: Our Hearts in HIS Hand



The first Sunday in October is traditionally set aside for the observation of LWML Sunday, but it may be celebrated at any time.

“Our Hearts in His Hand” is the theme for LWML Sunday 2021 and is based on Peter’s first letter to persecuted Christians in Asia Minor. In chapter 4:8, Peter tells them, *Above all, keep loving one another earnestly.* The heart of the LWML is its members; our hearts have been made holy by God. We are fully dedicated to serving Him, by serving His Church at home and abroad. Our hearts for Christ are in His hand of service, wherever and when He has need of us.

2021 LWML Sunday downloadable materials, authored by Dr. Dale A. Meyer, are now available at lwml.org. All worship and devotional materials have received approval from LCMS Doctrinal Review.

YOUNG WOMEN

Ruby Prochnow, Chairman • youngwomen@lwmlmnn.org • 320-808-3371

Committee Members

Rev. Matthew Vrudny, Pastoral Counselor • Barbara Angland • Marcia Lips

This past year we have often felt isolated, not able to meet as usual. The social distancing and masks brought about feelings of separation. We, as God’s people, knew we were not isolated. He is always with us – pandemic or not.

At times like this, the circumstances can tempt us to lose faith and not trust that God is with us. Our faith can wane, but “WAIT”; God created this earth, and we shall remember the motto of this free country, IN GOD WE TRUST. Make it your motto as well. At these times we look to Our Almighty God for nourishment for our faith. *He who dwells in the shelter of the Most High will abide in the shadow of the Almighty* (Psalm 91:1).

The convention provided much nourishment for the LWML ladies attending in person or virtually. Praise the Lord for that nourishment for our souls!

LWML Convention memorable moments from MNN Young Women Representatives -

Megan Reber:

It was wonderful talking to women from all over America who share the same faith. I totally enjoyed attending the POWERFUL Opening Service, seeing all the mission grants funded by LWML mites, and hearing Gary Thies’ Presentation.

Alyssa Boysen:

One of the largest inspirations of the convention was being able to see how ‘my’ talents can be used in “Serving the Lord”. After talking with the representative from CHILD BEYOND INTERNATIONAL, I could see how I could use my talents in the healthcare field to help children who are unable to receive regular care. This has given me an incentive to make a long-term goal of going on a mission once I have completed my degree.

My second most memorable thought was that I was in ‘awe’ hearing of what mites can do when they are brought together. Once I was able to see how much our total was able to give to so many different groups in need, I was very inspired to continue with my Mite Box. I could see that when so many women are faithful in adding mites together, it can help many people.



Pictured above: LWML Minnesota North District President Kathy Brandt, LWML Minnesota North District YWRs: Megan Reber and Alyssa Boysen

MEMORIALS & HONORARIUMS

April 2021 - June 2021

- In memory of Nancy Oswald from Sally Grabuski**
- In memory of Luverne Ross-Smith from Crookston, Our Saviors Afternoon Guild**
- In memory of Terry Gaarsland from Parkers Prairie, Immanuel**
- In memory of Darlene Samelson from Parkers Prairie, Immanuel**
- In memory of Marlene English from Connie Soaza**
- In memory of Marlene English from Connie Johnson**
- In memory of Bill Thompson from Ruth Thompson**
- In memory of Norine Pittsford from Rose Hein**
- In memory of Marlys Moline from Cambridge, Joy Women of Joy**
- In memory of Edwin Goetsch from Bellingham, Trinity Aid**
- In memory of Elsie Anderson from Sauk Centre, Zion**
- In memory of Elaine Lewis from Detroit Lakes, Zion**

Memorial gifts and Honorariums should be sent to the Financial Secretary, Peggy Pasche, 16287 County Road 5, Hoffman MN 56339. Phone: 320-986-2452 (H), 218-731-7629 (C), financialsec@lwmlmnn.org. Financial Remittance Form can be downloaded from the Resources page of our district website at lwmlmnn.org.

SCHOLARSHIPS

Valerie Johnson, Chairman • scholarships@lwmlmnn.org • 320-986-2848

Committee Members

Rev. Reed Stockman, Pastoral Counselor • Karen Groneberg • Elizabeth McTighe

Vocation of Choice

The Scholarship Committee met to review the applications for the coming year and presented our applicants to the LWML MN North Board of Directors who approved them. There are three returning students and two new applicants. These young people have such powerful faith backgrounds and love for our Lord and Savior; all of them wanting to serve God's people. One student joined the Army Reserve to better serve with the experience he will get there. Another student likes the Greek and Latin languages. Whatever their career choice, the LWML MN North District would like to help them. We are happy to be able to give scholarships to deserving Minnesota North District students pursuing full-time church work and those preparing for ordination.

Please remember the Scholarship Committee in your prayers, as we review the applicants. Also remember the applicants with your prayers and mites.

MISSION GRANTS REPORT

A total amount of \$15,700 in mites for LWML MN North grants was raised this past quarter. The Mission Grant Committee recommended, and the BOD approved, the payment of grant allocations as follows: \$1,500 for Orphan Grain Train, \$2,000 for Scholarships for Men Preparing for Ordination, \$5,000 for C.R.O.S.S. Appeal, \$3,000 for Financial Assistance for Food and Clothing Co-op, CTS, Fort Wayne, \$2,700 for At Just the Right Time - Mission Central, and \$1,500 for Doxology Pastoral Care and Well-being. The chart below details the current balance remaining for the 2020-2022 biennium.

	MISSION GRANTS FOR THE 2020-2022 BIENNIUM (Balance as of July 13, 2021)	GRANT AMOUNT	BALANCE REMAINING
Grant 1	Orphan Grain Train	\$9,000	\$4,500
Grant 2	Lutheran Island Camp and Christ Serve Ranch	\$10,000	\$5,000
Grant 3	Scholarships for Men Preparing for Ordination	\$8,000	\$4,000
Grant 4	C.R.O.S.S. Appeal	\$18,000	\$6,000
Grant 5	Scholarships for Full-Time Church Work Students	\$32,000	\$11,800
Grant 6	Financial Assist for Food & Clothing Co-op, CTS Fort Wayne	\$10,000	\$5,000
Grant 7	At Just the Right Time - Mission Central	\$10,000	\$5,000
Grant 8	“Main Street Living North” Ministry Outreach TV Program	\$5,000	\$2,500
Grant 9	Doxology Pastoral Care and Well-being	\$15,000	\$7,500
Grant 10	Project 24, Christ’s Care for Children - Kenya	\$10,800	\$4,500
Grant 11	LSF Haiti - Jacmel Lutheran Home & Center of Refuge Orphanage	\$10,000	\$4,500
Grant 12	Connecting People in an inclusive Christian Housing Community (partially funded)	\$2,700	PAID IN FULL
TOTALS		\$140,500	\$60,300

HUMAN CARE

Jean Tester, Chairman • humancare@lwmlmnn.org • 218-207-9654

Committee Members

Rev. Matthew Vrudny, Pastoral Counselor • Sheri Adkins • Patty Wiedewitsch

It’s All About JESUS!

After attending the 2021 LWML Convention, I am doubly committed to remembering that “all we do to serve and share” needs to point to Jesus.

On the national level, this committee is called the “Gospel Outreach Committee”. How do we “reach out”? We share our faith in Jesus through the Word. We perform deeds of service and/or give items to those who are hurting; we show compassion on multiple levels—from local to global.

We need to be diligent in our efforts to give our gifts with the message that Jesus is our Savior. In sending items, we need to make sure that items go to organizations that deliver them with the Gospel message. It could be through a mission team, church workers, or an organization that is recognized as being servants of Jesus.

Focus on Jesus and what He has done for us. After all, IT’S ALL ABOUT JESUS!

LEADER DEVELOPMENT

Carole Borchers, Chairman • leaderdevelopment@lwmlmnn.org • 320-808-3371

Committee Members

Rev. Matthew Vrudny, Pastoral Counselor • Emily Gruenwald

How Can You Be A Pillar in Your Group?

“If anyone speaks, they should do so as one who speaks the very words of God. If anyone serves, they should do so with the strength God provides, so that in all things God may be praised through Jesus Christ. To him be the glory and the power forever and ever. Amen” (1 Peter 4:11 NIV).

A pillar is an object used to support a structure. Saint Peter is often called a pillar of the church. He gives us great advice in the previous passage to help us define how we, too, can be pillars. In organizations such as the Lutheran Women’s Missionary League, “pillars” are members who are servant leaders and who set an example for others to follow. Strong groups need strong leaders, and strong leaders need strong members. Here are some ways to help build up the LWML group and support the work God has given it to do:

***Be in the Word.** God’s Word is our strength. Servants need to be nourished by the Word in order to be strong. Being in the Word as a group and as an individual will strengthen your bond as sisters in Christ.

***Be in prayer as you plan.** Don’t be too busy to do what is most important. Praying is a bit like blogging. With blogging, we pour our hearts out in our online entries. We then hope someone will read the entry, and we may look to see if anyone has offered feedback. With prayer, we don’t need to wonder if anyone is listening; we know God always hears us. He offers direction and guidance in His Word to inspire us with ways to address our problems, and He delights when we share our joys with Him!

***Connect.** People forget 80 percent of what they hear, usually within hours of hearing it, but emotional context helps them remember.

Find ways to connect personally with others.

Ask questions and identify areas of common interest. Share stories to connect with other women.

***Collaborate.** Your sisters in Christ are an excellent support system. Ask for their opinions and listen to what they say. Incorporate their input into your decision making. Work on inclusion; resist exclusion.

***Brainstorm new ideas.** Discuss different ways you can serve the Lord with gladness in your congregation that doesn’t involve traditional activities such as serving food. Make a list of every idea and choose two to implement this year.

***Put yourself out there.** Go out of your way to greet a sister you haven’t talked to in a while. Never ignore someone because you think she ignored you first; she probably never even noticed you were there because she was trying to remember if the oven has been turned off. Do something kind for a sister in Christ with no expectation of anything in return. Your positive, genuine efforts will have a lasting impact. And that’s the way it starts — once you begin to reach out to others, they may try it too, because they see it’s safe and enjoyable.

***Do the right thing because it’s the right thing to do.** Demonstrate integrity and stand up to inappropriate comments or decisions. Often all it takes is one brave soul to ask a sensible question, “Do we all really believe this is the right thing to do ... is this what God would have us do?” Then more people will feel strong enough to say that they, too, don’t agree. That one brave soul can be anyone. With God’s help, it can be you.

***Be Confident in God.** He equips those He calls!

LWML Minnesota North District Board of Directors



LWML MN North District
www.lwmlmnn.org
 LWML: www.lwml.org

Submit an article

Does your zone or society have an event or story to share? Please send your article and pictures to the Editor at:
editor@lwmlmnn.org.

Minnesota Northern Light

Sign up to receive an email notice each quarter announcing when the *Minnesota Northern Light* is ready to download from the district website:
www.lwmlmnn.org.

Prayer & Praise Mite Calendar

A great help in your prayer and praise life – especially remembering the mission grants we’re supporting. Download this month’s calendar from the Publication Menu.

EXECUTIVE COMMITTEE

LWML District President
 Kathleen Brandt
 2099 County Highway 24
 Ada, MN 56510
president@lwmlmnn.org
 218-784-4772

Executive Vice President
 Corles Rainer, Christian Life
christianlife@lwmlmnn.org
 320-743-2131

Recording Secretary
 Esther Schlicker
recordingsec@lwmlmnn.org
 218-316-2924

Corresponding Secretary
 Mary Scott
corrsec@lwmlmnn.org
 320-351-6804

Financial Secretary
 Peggy Pasche
 16287 County Road 5
 Hoffman, MN 56339
financialsec@lwmlmnn.org
 320-986-2452

Treasurer
 Kathy Steinmetz
treasurer@lwmlmnn.org
 218-556-2431

PASTORAL COUNSELORS

Arrowhead Region
 Rev. Bruce Timm
arrowheadpc@lwmlmnn.org
 320-252-8171 (O)
 320-259-9795 (H)

Lakeland Region
 Rev. Reed Stockman
lakelandpc@lwmlmnn.org
 319-480-8927

Park Region
 Rev. Matthew Vrudny
parkpc@lwmlmnn.org
 218-547-4139 (O)

REGIONAL VICE PRESIDENTS AND COMMITTEE CHAIRMEN

Arrowhead I Regional VP
 Vacant
president@lwmlmnn.org
 218-784-4772

Arrowhead II Regional VP
 Karena Lapolice
structure@lwmlmnn.org
 763-234-2522

Lakeland I Regional VP
 Carole Borchers, Leader Development
leaderdevelopment@lwmlmnn.org
 218-287-8049

Lakeland II Regional VP
 Valerie Johnson, Scholarships
scholarships@lwmlmnn.org
 320-986-2848

Park I Regional VP
 Marcia Wittenburg, Public Relations
publicrelations@lwmlmnn.org
 225-328-2969

Park II Regional VP
 Glenice Hall, Mission Grants
missiongrants@lwmlmnn.org
 218-847-7064

Human Care
 Jean Tester
humancare@lwmlmnn.org
 218-207-9654

Young Women
 Ruby Prochnow
youngwomen@lwmlmnn.org
 320-808-3371

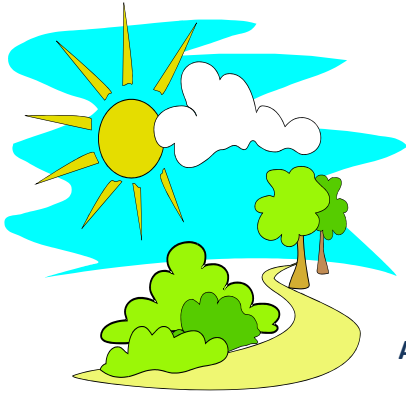
APPOINTED PERSONNEL

Archivist-Historian
 JoNette Brogaard
historian@lwmlmnn.org
 320-846-0984

Editor
 Karena Lapolice
editor@lwmlmnn.org
 763-234-2522

Information Technologist
 James Wagner
InformationTech@lwmlmnn.org
 218-289-2457

2021 LWML RETREAT



*“The
Way
Home”*

A Study of the Book of Ezra

August 13-15, 2021, Lutheran Island Camp, Henning, MN

On Friday evening, Rev. Bruce Timm, Redeemer – St. Cloud and Arrowhead Pastoral Counselor, will lead a Bible study titled “Heaven is My Home?”

On Saturday the retreat participants will be engaged in a study of the Book of Ezra, led by Pastor Timm. **Participants are encouraged to read Ezra prior to the retreat.**

Throughout the weekend there will be demonstrations, crafts and games that participants can enjoy during free time.



By registering for the Retreat, the participant grants LWMLMNN the right and permission to take photographs during the retreat, and to retain, publish and distribute, without charge or fee, such photographs.

SPECIAL OFFERS: Bring a “Retreat First Timer” and you will receive 10% off the registration price and the first timer will receive a 25% off the registration price. Also, young women ages 12-18 receive a 25% discount.

Tentative Schedule

-----	FRIDAY EVENING
4:00-6:00 pm	Registration
6:00 pm	Picnic supper
7:15 pm	Bible Study: <i>Heaven is My Home?</i>
8:30 pm	Campfire, Crafts, Games Snacks in the Fireside Room
-----	SATURDAY
7:00-8:00 am	Registration
8:00 am	Breakfast
8:45 am	Ice Breaker
9:15 am	Session I
10:00 am	Sketch/Break
10:15 am	Session II
11:00 am	Photos (Group, First Timers, Individual Groups)
12:00 noon	Lunch
1:00 pm	Session III
1:45 pm	Sketch/Break
2:00 pm	Session IV
2:45 pm	MNN Dist. President
3:00 pm	Free Time (demonstrations, games, & crafts available)
5:00 pm	Dinner
8:00 pm	Campfire, Crafts, Games
-----	SUNDAY
8:00 am	Breakfast
10:00 am	Worship & Farewell

Items to Bring:

- Bible
- Flashlight
- Insect Repellent
- Pillow, Bedding or Sleeping Bag
- Snacks to share
- Toiletries
- Towel & Washcloth
- Clothes for sun or rain



2021 LWML RETREAT

August 13-15, 2021

Lutheran Island Camp

Registration Deadline: August 6, 2021

(No refunds after August 8, 2021)

**Make check payable to:
LWML MN North District**

Name : _____

Address : _____

Phone : _____

Email : _____

Special Needs : _____

Roommates : _____

Check here if you are age 12-18

Check here if you are a “Retreat First Timer”

Name of person bringing you. _____

✓ Check	Before Aug. 6 th	After Aug. 6 th
<input type="checkbox"/> Friday-Sunday	\$125	\$135
<input type="checkbox"/> Friday-Saturday	\$75	\$85
<input type="checkbox"/> Saturday Only	\$55	\$65

Choose your housing preference:

- Cabin Retreat Center

Send registration to:

Corles Rainer
8813 – 71 Street SE
Clear Lake, MN 55319