



"Serve the Lord with Gladness..." Psalm 100:2

Dear Sisters in Christ!

We welcome spring as a time of renewal and celebration of life!! We celebrate the Resurrection of our Lord and Savior, Jesus Christ! What awesome love we are showered with from our loving Father by sending His only Son to give us the free gift of salvation!

With the spring season comes our Zone Rallies. How exciting to get together to serve and worship our Lord, especially now — after a full year of lockdowns and cancelled events. Each rally has been carefully planned to keep everyone safe and healthy. Check out our webpage for information on the various rallies being held within our Minnesota North District. There are many excellent speakers and programs being planned.

Is your zone having a rally? (Is your group meeting?) If not, perhaps there is something that can be done to replace meeting in person. Mailbox members is one way to keep in touch. The information can be found at <https://www.lwml.org/mailbox>. It can be done by USPS mail, email or using the church mailboxes. One LWML group mailed out the information each month as many members were not able to come to church for most of the past year. Each month, a devotion, a letter of encouragement, and sometimes, a little project or artwork was included. It is a way to keep in contact and to let others know about the work of the LWML.

Of course, we are all excited about the 2021 LWML Convention in Lexington, Kentucky!! It has been decided to hold this convention in person, (June 24-27) with all the CDC health and safety protocols in place. Please keep the presenters, planners, and participants of the upcoming 2021 LWML Convention in Lexington, Kentucky, in your prayers.

In His Service,
Kathy Brandt
President, LWML Minnesota North District



Lexington Convention Information

LWML Minnesota North District has a bus available to attend the convention in Lexington, Kentucky. For more information contact Nadine Drevlow at drevlowmn@hotmail.com.



Now is the time to start collecting Gifts from the Heart (donations for many organizations) to

put in your suitcase to bring to Lexington. Recipients include Assurance for Life Ministry (Lexington); MOST Ministries; and Concordia Theological Seminary, Fort Wayne, Indiana, and Concordia Seminary, St. Louis food banks. Items to bring include newborn, baby, and toddler supplies; gift cards in denominations of \$10, \$20, and \$25 (Walmart or Target); small "First" Christian books (board books, vinyl books); and eyeglasses. Space will be available on the bus for these items.

STRUCTURE 2
 2021 UPCOMING EVENTS 2
 MISSION GRANTS 3
 CHRISTIAN LIFE 4
 YOUNG WOMEN 5
 MEMORIALS & HONORARIUMS 6
 MISSION GRANTS REPORT 7
 SCHOLARSHIPS 7
 LEADER DEVELOPMENT 8
 HUMAN CARE 9
 LWML Minnesota North District Board of Directors 10

STRUCTURE

Carla Patton, Chairman
 structure@lwmlmnn.org
 320-380-5775

Committee Members

Rev. Bruce Timm, Pastoral Counselor
 Leone Blommer • Pearl Dohrmann • Phyllis VanBuren

BYLAW Change to Article on Duties of the Officers

But everything should be done in a filling and orderly way. (1 Corinthians 14:40)

An issue has come to the attention of the Structure Committee. This issue is regarding the number of pastors that are retiring or are receiving and taking calls outside our current district and /or zone. A number of zones have seen an increase in the absence of a Pastor for their churches. The available Pastoral Counselors to be requested to serve is being reduced and in some cases there are none that are willing to serve due to the many other commitments that they may already have.

Another issue that is a problem for zones is the bylaw regarding duties of the Pastoral Counselor. In some of the zone bylaws it states that the Pastoral Counselor must be active. Zone Presidents should review their bylaws and if this is stated it should be amended to read: the Pastoral Counselor may be active or inactive. This change will allow the zone to select a pastor who is retired but still living in their zone. Retired Pastors will make wonderful Pastoral Counselors; many would love to serve the Lord in that position.

Thanking you in advance for giving the change your consideration. If you have any questions or concerns please call or email me.

2021 UPCOMING EVENTS

Jun 15	Minnesota Northern Light Summer Issue articles due
Jun 24-27	LWML Convention in Lexington, Kentucky
Jul 13	BOD Meeting
Sept 15	Minnesota Northern Light Fall Issue articles due
Oct 12	BOD Meeting



Mustard Seed Devotions can be sent directly to your email daily. Visit www.lwml.org/mustard-seed-devotions to sign up.

Can you help?

The LWML Minnesota North District is looking to buy an inexpensive 6X12 foot, single axle, enclosed trailer for storing and transporting convention items. If you have one for sale or know of someone who does, please contact LWML Minnesota North District President Kathy Brandt at kathyrae56510@yahoo.com or at 218-766-1135. Must be in good condition and ready to use.

MISSION GRANTS

Susan Zeige, (Outgoing) Chairman • missiongrants@lwmlmnn.org • 218-301-0167

Committee Members

Rev. Bruce Timm, Pastoral Counselor • Sandra Bakeberg • Joan Johnson • Carol Ann Sander • Carol Westendorf

Mites Can Do “Mitey” Things

It has now been over a year since things were turned upside down and the world changed as we know it. Praise God that things are improving; the idea of turning the dial back to "normal" is exciting! As life goes on, so does the need for mites to support the mite grants that we adopted as a district last year. This has been a concern for our district and other districts as well, as we want to see our grants fully funded, and we have just over four quarters to meet our goal.



We are thankful that the LWML mite goal has been met—Praise the Lord!! Now we need to focus on helping students prepare for future church vocations, ensuring that orphanages are supported, providing funds for *Orphan Grain Train* to continue to ship needed supplies all over the world, helping fund the spread of the Gospel through *Main Street Living* and the list continues...

Here are some creative ways that groups are using (or can use) to collect mites:

- Several groups have held "Pick up and Go" Suppers, where individuals drive up to the church and receive their "take-out" orders. This has proven to be very successful, and the proceeds have benefited our mite collection.
- As warmer weather approaches, another thought is having a garage or rummage sale. Many of us have had lots of time indoors to go through all of the things that are cluttering our homes; this is a great time to get rid of these items through these sales.
- You may also have to make a required minimum distribution this year through any investments you might have, and possibly that could also go to our district for mites.

These are just a few suggestions, and we challenge you to think of new ways to support not only our missions, but also to "Serve the Lord with Gladness".

Board of Director Personnel Changes

Arrowhead I Regional Vice President and Mission Grant Chairman, Sue Zeige, has resigned, as she and her husband are moving out of the region. Sue has served 5+ years in this position and we will miss her. We look forward to her continued participation in other positions with the LWML Minnesota North District. We are grateful to her for all she has done!

According to the bylaws, the Mission Grant Chairman position must be held by a Regional Vice President. Therefore, Park II Regional Vice President, Glenice Hall, has been appointed as Mission Grant Chairman. The committee members remain the same.

The Human Care Committee Chairman position that Glenice held will now be held by Jean Tester, who has been a Human Care Committee member.

These changes all are in effect as of April 13, 2021. Our District is very blessed to have so many willing and capable ladies to assume these duties.

Thank you to Sue Zeige, Glenice Hall and Jean Tester!



Jean Tester
Human Care
Chairman

CHRISTIAN LIFE

Corles Rainer, Chairman • christianlife@lwmlmnn.org • 320-743-2131

Committee Members

Rev. Bruce Timm, Pastoral Counselor • Jolene Henning • Karena Lapolice • Doris Schroeder • Ruth Thompson

2020 Report of Christian Life Activities

Congratulations and Thank You!

While reviewing the Christian Life reports, I was encouraged to discover that many of you continued with Christian Life activities even in the midst of all the shut-downs during 2020.

Here are some of the statistics:

- Eighty groups continue to participate in Bible studies, 63 help with the cost of members attending LWML events, 70 provide carpooling, and 74 announce all events in church communications and extend personal invitations to LWML meetings.
- Fifty-one groups participate in a prayer chain, 38 make the Mite Calendar available and promote mite collections & prayers, 46 encourage and thank Sunday School teachers and VBS volunteers.
- Fifty-eight groups visit people in nursing homes and the homebound praying with them and holding devotions, 19 hold a community event, providing food and Christian entertainment.

A full report will be sent to Zone Presidents and Christian Life Chairmen.

As we look forward to spring and summer, here are some suggested LWML resources; you can check them out by going to the LWML website: lwml.org.

Devotions

- On Solid Ground: Living and Sharing Jesus' Easter Victory
- Raising Children Who Love Jesus
- Women at Work for the Lord

Bible Studies

- From Good to Better to Best
- Raising Christian Children
- Sharing Our Gifts as We Work for the Lord

Sketches and Drama

- The Mite Box Legacy
- Wearing the Armor of God – Really!
- Spiritual Makeover

LWML 2021 Prayer Service

The 2021 Prayer Service, written by past LWML Pastoral Counselor Rev. Robert Mundahl, is "He Prayed with Them," based on Acts 20:36b.

- * When was the last time you prayed with someone?
- * Not for someone, but with someone?



We are encouraged in Scripture to be people of prayer, and prayer marks us as children of the heavenly Father. He has promised to hear us and to answer our prayers. May the 2021 Prayer Service encourage and expand our life of prayer to include praying with others.

If you need help obtaining one of these resources, feel free to contact me at 320.743.2131 or christianlife@lwmlmnn.org.

CHRISTIAN LIFE (CONT'D)

2021 LWML MN North District Retreat

Save the dates! The LWML Retreat at Lutheran Island Camp will be August 13-15, 2021. The theme of the 2021 Retreat is "The Way Home." This is a study of the book of Ezra.



The retreat will begin with a Bible study on Friday evening titled "Heaven is My Home?" Besides being in God's Word that weekend, there will be time to relax, connect with old friends, and make new friends. For more information, contact Corles Rainer at 320.743.2131 or christianlife@lwmlmnn.org. A registration form can be found at the end of this newsletter and on the LWML MN North website (lwmlmnn.org).

YOUNG WOMEN

Ruby Prochnow, Chairman • youngwomen@lwmlmnn.org • 320-808-3371

Committee Members

Rev. Matthew Vrudny, Pastoral Counselor • Barbara Angland • Marcia Lips

The YWR Committee has selected the two YWRs to attend the LWML Convention in Lexington, Kentucky this June. It is my pleasure to introduce to you, the LWML MNN District, the YWR delegates who will represent you at the convention in June.

Megan Reber, Faith Lutheran Church, St. Cloud, MN, serves in the LWML group of her congregation. The women of her group have been faithful and inspiring mentors for Megan. She looks forward to using her organizational skills, along with her ability to work with others and her desire to help others, as she "Serves the Lord With Gladness".

Alyssa Boysen, Good Shepherd Lutheran Church, Alexandria, MN, says, "Serving the Lord With Gladness starts with finding what you love to do." Teaching VBS and Sunday School illustrate this finding in Alyssa's heart. An important goal of Alyssa's is that she may display her ability to dig deep into what it means to be a part of the LWML "Serving the Lord With Gladness."

Let us pray for these two young women, asking God to bless them with a 'BEAUTIFUL EXPERIENCE RUNNING THE RACE' in Lexington and after.

2022 LWML District Convention

The 2022 LWML Minnesota District Convention will be held June 20-22, 2022, at the Courtyard by Marriot in Moorhead, Minnesota. The theme is "Drawn to the Cross" and our convention Bible verse is: *Be strong and courageous. Do not be frightened, and do not be dismayed, for the LORD your God is with you wherever you go* (Joshua 1:9b). The Keynote speaker will be Debbie Griffith from International Falls, Minnesota. Debbie has a one minute radio talk "Everyday Matters" heard on over 100 radio stations. She is a story teller, humorist, and most importantly, a speaker who wishes to share the joy of following Jesus Christ. More details will follow in the months to come.

MEMORIALS & HONORARIUMS

January 2021 - March 2021

In memory of Julie Rutherford from Fisher, Trinity Ladies Aid
 In memory of Virginia Ansorge from Willmar, Redeemer Ruth Circle
 In memory of Barbara Canion from Bonnie Rhoda
 In memory of Barbara Canion from Deb Bremseth
 In memory of David Schroeder from Connie Johnson
 In memory of Clara Lotthammer from Marion Goetsch
 In memory of Sandi Lorenzen from Marion Goetsch
 In memory of Joe Cox from Parkers Prairie, Immanuel
 In memory of Charlotte Pexsa from Parkers Prairie, Immanuel
 In memory of Phyllis Schmidt from Darlene Lind and Delores Larson
 In memory of Evelyn Perrine from Frazee, Bethlehem LWML
 In memory of LaVonne Schultz from Frazee, Bethlehem LWML
 In memory of Elinor Rethwisch from Frazee, Bethlehem LWML
 In memory of Delores Betterman from Alexandria, Zion Evening Guild
 In memory of Lila Newhouse from Crookston, Our Savior's Afternoon Guild
 In memory of Joe Mack from Ottertail, St John's LWML
 In memory of Marv Poaler from Ottertail, St John's LWML
 In memory of Louise Robinson from Detroit Lakes, Zion
 In memory of Rose Wittnebel from Marion Goetsch
 In memory of Phyllis Schmidt from Bemidji, Trinity Ladies Aid
 In memory of Carol Sorenson from Bemidji, Trinity Ladies Aid
 In memory of Elsie Anderson from Sauk Centre, Zion
 In memory of Betty Jacobs from Anne Hansen
 In memory of Susan Swenson from Crookston, Our Saviors Afternoon Guild
 In memory of Judy Penrose from Parkers Prairie, Immanuel LWML
 In memory of Arlo Peterson from Parkers Prairie, Immanuel LWML

Memorial gifts and Honorariums should be sent to the Financial Secretary, Peggy Pasche, 16287 County Road 5, Hoffman MN 56339. Phone: 320-986-2452 (H), 218-731-7629 (C), financialsec@lwmlmnn.org. Financial Remittance Form can be downloaded from the Resources page of our district website at lwmlmnn.org.

Did you know...

Your LWML group can "star" in the *Lutheran Witness* LWML Supplement page! If you would like your group photo and activity displayed, please send a summary of the article and a photo to the Editor at editor@lwmlmnn.org.

MISSION GRANTS REPORT

A total amount of \$17,200 in mites for LWML MN North grants was raised this past quarter. The Mission Grant Committee recommended, and the BOD approved, the payment of grant allocations as follows: \$5,000 for Scholarships for Full-Time Church Work Students, \$3,000 for Doxology Pastoral Care and Well-being, \$3,500 for Project 24 Christ’s Care for Children-Kenya, \$3,000 for LSF Haiti-Jacmel Lutheran Home and Center of Refuge Orphanage, and \$2,700 for Connecting People in an inclusive Christian Housing Community. The chart below details the current balance remaining for the 2020-2022 biennium.

	MISSION GRANTS FOR THE 2020-2022 BIENNIUM (Balance as of April 13, 2021)	GRANT AMOUNT	BALANCE REMAINING
Grant 1	Orphan Grain Train	\$9,000	\$3,000
Grant 2	Lutheran Island Camp and Christ Serve Ranch	\$10,000	\$5,000
Grant 3	Scholarships for Men Preparing for Ordination	\$8,000	\$6,000
Grant 4	C.R.O.S.S. Appeal	\$18,000	\$11,000
Grant 5	Scholarships for Full-Time Church Work Students	\$32,000	\$11,800
Grant 6	Financial Assist for Food & Clothing Co-op, CTS Fort Wayne	\$10,000	\$8,000
Grant 7	At Just the Right Time - Mission Central	\$10,000	\$7,700
Grant 8	“Main Street Living North” Ministry Outreach TV Program	\$5,000	\$2,500
Grant 9	Doxology Pastoral Care and Well-being	\$15,000	\$9,000
Grant 10	Project 24, Christ’s Care for Children - Kenya	\$10,800	\$4,500
Grant 11	LSF Haiti - Jacmel Lutheran Home & Center of Refuge Orphanage	\$10,000	\$4,500
Grant 12	Connecting People in an inclusive Christian Housing Community (partially funded)	\$2,700	PAID IN FULL
TOTALS		\$140,500	\$76,000

SCHOLARSHIPS

Valerie Johnson, Chairman • scholarships@lwmlmnn.org • 320-986-2848

Committee Members

Rev. Reed Stockman, Pastoral Counselor • Karen Groneberg • Elizabeth McTighe

The deadline to apply for Scholarships for Men Preparing for Ordination and Full-time Church Work Students is May 15, 2021. Please encourage students attending our synodical schools for church work to apply.

Please continue to pray for these students: Sarah J., Madison P., Jacob F., LeAnn G., Andrew H., Berett S., and Josef M. May their studies continue, in spite of Covid-19 restrictions, and may God’s will be done.

Applications and requirements are available to download from the LWML MN North website under the Resources or Scholarships pages at: www.lwmlmnn.org.

LEADER DEVELOPMENT

Carole Borchers, Chairman • leaderdevelopment@lwmlmnn.org • 320-808-3371

Committee Members

Rev. Matthew Vrudny, Pastoral Counselor • Emily Gruenwald

Lessons From David

“Moreover,” David said, “The Lord, who delivered me from the paw of the lion and from the paw of the bear, He will deliver me from the hand of this Philistine” (1 Sam. 17:37).

When the army of Israel faced the giant, Goliath, they were filled with fear. Whatever gave David the idea he could go against him? How did he do it?

1. *He had a different perspective...*he saw it as an opportunity, not a battle like the army.
2. *His method* was tried and true; different from the battle-field method.
3. *His conviction* differed from others. He heard Goliath’s threats against the God of Israel and he knew God could beat him.
4. *His vision* had purpose...to make Yahweh known as the most powerful God in the world.
5. *His experience* was different...he had seen God at work in his life and trusted Him.
6. *His attitude* differed: from a threat too big to hit, but rather a target too big to miss.

These differences in David’s life made a difference in the outcome of what he did. How can you make a difference in someone’s life? When contemplating a task, how might your perspective, the way you have done things, your conviction and vision, your previous experiences, and attitude, shape your battle-plan? Most important is the conviction that with the help of God you can succeed in what He calls you to do. God works things for good for those who love Him and are called according to His purpose. Our purpose: to bring glory to God, not ourselves.

Based on a devotion from Leadership, Promises for Every Day by John C. Maxwell.



The *Minnesota Northern Light* newsletter is published quarterly. Article submission deadline is December 15, March 15, June 15 and September 15. Sign up to receive the newsletter online. Go to lwmlmnn.org and look for the Subscribe button.

HUMAN CARE

Glenice Hall, Chairman • humancare@lwmlmnn.org • 218-847-7064

Committee Members

Rev. Matthew Vrudny, Pastoral Counselor • Sheri Adkins • Jean Tester • Patty Wiedewitsch

Human Care In Action

We can show human care many different ways. Whether it be one on one, or a group doing something for others. During this pandemic, there has been a lot done individually – caring for those who have been shut-in, making face masks, sending cards, etc. These have all been caring gifts and showing God’s love to others. As LWML members, have you thought of ways to get your congregation and perhaps your community involved in your Human Care projects? Below are some projects that have been done by LWML groups/congregations in our Minnesota North District:

Swaddling Clothes

Redeemer Lutheran Church in Aurora, Minnesota, takes donations of items associated with pregnancy and motherhood – maternity and baby clothes, diapers, formula, bottles, etc. On the second Saturday of each month, they host a “shopping day” from 9 AM until noon, where people can take what they need, up to a certain number of items. What a wonderful way to honor the Sanctity of Life, provide a valuable service to people in need, and get many others involved!



Cookie Drive-By

The LWML group at Bethlehem Lutheran Church, Frazee, Minnesota, have hosted “Cookies for Campers” twice a year for many years. Each time they asked for cookies from the congregation and received generous donations from the wonderful bakers within the church. During this pandemic they changed to “Cookie Drive-By” to assure they met the restrictions. The cookies were packed in one pound boxes of holiday, traditional, or assorted cookies. The proceeds from the “Cookie Drive-By” will assist children in attending Lutheran Island Camp (LIC) and/or the 2022 National Youth Gathering. (One year there was extra money from the sales, so a busload of community children had the privilege of going for a Day Camp at LIC!)

year there was extra money from the sales, so a busload of community children had the privilege of going for a Day Camp at LIC!)

Hygiene Kits

For one month, the members of Zion Lutheran Church in Detroit Lakes, Minnesota, were asked to bring in items for Hygiene Kits for Orphan Grain Train. At the end of the month, the LWML group assembled the donations into kits. The result was 105 kits and numerous individual items remaining for more kits. Sounds like the project continues . . .



Thank you to these groups/congregations for reaching out to help others. May we all continue to “Serve the Lord with gladness!”

LWML Minnesota North District Board of Directors



LWML MN North District
www.lwmlmnn.org
LWML: www.lwml.org

Submit an article

Does your zone or society have an event or story to share? Please send your article and pictures to the Editor at: editor@lwmlmnn.org.

Minnesota Northern Light

Sign up to receive an email notice each quarter announcing when the *Minnesota Northern Light* is ready to download from the district website: www.lwmlmnn.org.

Prayer & Praise Mite Calendar

A great help in your prayer and praise life – especially remembering the mission grants we’re supporting. Download this month’s calendar from the Publication Menu.

EXECUTIVE COMMITTEE

LWML District President
Kathleen Brandt
2099 County Highway 24
Ada, MN 56510
president@lwmlmnn.org
218-784-4772

Executive Vice President
Corles Rainer, Christian Life
christianlife@lwmlmnn.org
320-743-2131

Recording Secretary
Esther Schlicker
recordingsec@lwmlmnn.org
218-316-2924

Corresponding Secretary
Mary Scott
corrsec@lwmlmnn.org
320-351-6804

Financial Secretary
Peggy Pasche
16287 County Road 5
Hoffman, MN 56339
financialsec@lwmlmnn.org
320-986-2452

Treasurer
Kathy Steinmetz
treasurer@lwmlmnn.org
218-556-2431

PASTORAL COUNSELORS

Arrowhead Region
Rev. Bruce Timm
arrowheadpc@lwmlmnn.org
320-252-8171 (O)
320-259-9795 (H)

Lakeland Region
Rev. Reed Stockman
lakelandpc@lwmlmnn.org
319-480-8927

Park Region
Rev. Matthew Vrudny
parkpc@lwmlmnn.org
218-547-4139 (O)

REGIONAL VICE PRESIDENTS AND COMMITTEE CHAIRMEN

Arrowhead I Regional VP
Vacant
president@lwmlmnn.org
218-784-4772

Arrowhead II Regional VP
Carla Patton
structure@lwmlmnn.org
320-380-5775

Lakeland I Regional VP
Carole Borchers, Leader Development
leaderdevelopment@lwmlmnn.org
218-287-8049

Lakeland II Regional VP
Valerie Johnson, Scholarships
scholarships@lwmlmnn.org
320-986-2848

Park I Regional VP
Marcia Wittenburg, Public Relations
publicrelations@lwmlmnn.org
225-328-2969

Park II Regional VP
Glenice Hall, Mission Grants
missiongrants@lwmlmnn.org
218-847-7064

Human Care
Jean Tester
humancare@lwmlmnn.org
218-207-9654

Young Women
Ruby Prochnow
youngwomen@lwmlmnn.org
320-808-3371

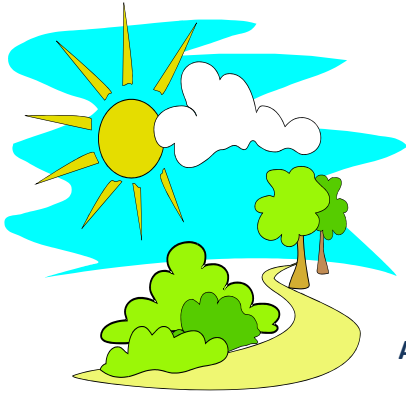
APPOINTED PERSONNEL

Archivist-Historian
JoNette Brogaard
historian@lwmlmnn.org
320-846-0984

Editor: Karena Lapolice
editor@lwmlmnn.org
763-234-2522

Information Technologist
James Wagner
InformationTech@lwmlmnn.org
218-289-2457

2021 LWML RETREAT



*“The
Way
Home”*

A Study of the Book of Ezra

August 13-15, 2021, Lutheran Island Camp, Henning, MN

On Friday evening, Rev. Bruce Timm, Redeemer – St. Cloud and Arrowhead Pastoral Counselor, will lead a Bible study titled “Heaven is My Home?”

On Saturday the retreat participants will be engaged in a study of the Book of Ezra, led by Pastor Timm. **Participants are encouraged to read Ezra prior to the retreat.**

Throughout the weekend there will be demonstrations, crafts and games that participants can enjoy during free time.



By registering for the Retreat, the participant grants LWMLMNN the right and permission to take photographs during the retreat, and to retain, publish and distribute, without charge or fee, such photographs.

SPECIAL OFFERS: Bring a “Retreat First Timer” and you will receive 10% off the registration price and the first timer will receive a 25% off the registration price. Also, young women ages 12-18 receive a 25% discount.

Tentative Schedule

-----	FRIDAY EVENING
4:00-6:00 pm	Registration
6:00 pm	Picnic supper
7:15 pm	Bible Study: <i>Heaven is My Home?</i>
8:30 pm	Campfire, Crafts, Games Snacks in the Fireside Room
-----	SATURDAY
7:00-8:00 am	Registration
8:00 am	Breakfast
8:45 am	Ice Breaker
9:15 am	Session I
10:00 am	Sketch/Break
10:15 am	Session II
11:00 am	Photos (Group, First Timers, Individual Groups)
12:00 noon	Lunch
1:00 pm	Session III
1:45 pm	Sketch/Break
2:00 pm	Session IV
2:45 pm	MNN Dist. President
3:00 pm	Free Time (demonstrations, games, & crafts available)
5:00 pm	Dinner
8:00 pm	Campfire, Crafts, Games
-----	SUNDAY
8:00 am	Breakfast
10:00 am	Worship & Farewell

Items to Bring:

- Bible
- Flashlight
- Insect Repellent
- Pillow, Bedding or Sleeping Bag
- Snacks to share
- Toiletries
- Towel & Washcloth
- Clothes for sun or rain



2021 LWML RETREAT

August 13-15, 2021

Lutheran Island Camp

Registration Deadline: August 6, 2021

(No refunds after August 8, 2021)

**Make check payable to:
LWML MN North District**

Name : _____

Address : _____

Phone : _____

Email : _____

Special Needs : _____

Roommates : _____

Check here if you are age 12-18

Check here if you are a “Retreat First Timer”

Name of person bringing you. _____

✓ Check	Before Aug. 6 th	After Aug. 6 th
<input type="checkbox"/> Friday-Sunday	\$125	\$135
<input type="checkbox"/> Friday-Saturday	\$75	\$85
<input type="checkbox"/> Saturday Only	\$55	\$65

Choose your housing preference:

- Cabin Retreat Center

Send registration to:

Corles Rainer
8813 – 71 Street SE
Clear Lake, MN 55319